

**Mansfield University**

***FACTBOOK***

2004-2005



Office of Institutional Research  
August, 2005

# TABLE OF CONTENTS

## PERSONNEL

1	Faculty Description .....	1
2	Staff Description.....	2
	Charts: Faculty Rank and Staffing Level by Classification .....	3

## NEW STUDENTS

3	Applicants of First-time Freshmen .....	4
4	Cohort Freshmen Profile .....	5
5	Cohort Freshmen by PA County .....	6
6	Cohort Freshmen Majors by Department .....	8
7	New Transfer Students by State of Prior College.....	10

## STUDENTS

8	All Undergraduate Students Profile.....	11
9	Graduate Students Profile .....	12
10	Enrollment History .....	13
11	Major and Minor by Department.....	14
12	Undergraduate Students by PA County.....	16

TABLE 1: Faculty Description

Fall	Academic Year									
	2000		2001		2002		2003		2004	
	Count	%	Count	%	Count	%	Count	%	Count	%
<b>Ethnicity</b>										
Black	NA		4	1.9%	5	2.4%	4	1.9%	4	1.9%
Native American			2	0.9%	2	1.0%	2	0.9%	0	0.0%
Asian			8	3.8%	10	4.8%	10	4.7%	10	4.7%
Hispanic			4	1.9%	7	3.4%	6	2.8%	7	3.3%
<i>All Minority</i>			18	8.5%	24	11.5%	22	10.3%	21	9.9%
White			194	91.5%	184	88.5%	191	89.7%	192	90.1%
<b>Gender</b>										
Female	NA		98	46.2%	95	45.7%	99	46.5%	106	49.8%
Male			114	53.8%	113	54.3%	114	53.5%	107	50.2%
<b>Status</b>										
Full-Time			168	79.2%	168	80.8%	166	77.9%	166	77.9%
Part-Time			44	20.8%	40	19.2%	47	22.1%	47	22.1%
<b>Full-Time Faculty Rank</b>										
Professor	NA		53	31.5%	48	28.6%	46	27.7%	43	25.9%
Assoc. Professor			59	35.1%	57	33.9%	56	33.7%	56	33.7%
Asst. Professor			39	23.2%	44	26.2%	48	28.9%	49	29.5%
Instructor			17	10.1%	19	11.3%	16	9.6%	18	10.8%
Total Full-Time			168		168		166		166	
<b>Terminal Degree<sup>1</sup></b>										
Degree	109	74.1%	113	75.3%	111	77.6%	115	76.7%	114	74.5%
Total Count	147		150		143		150		153	
<b>Faculty Total</b>										
	NA		212		208		213		213	
<b>FTE<sup>2</sup></b>	185.4		204.8		201.5		207.3		194.0	
<b>F/S Ratio</b>	15.2		14.4		15.1		15.0		15.8	

<sup>1</sup> Tenured and on tenure track only.

<sup>2</sup> FTE is based on teaching load and other faculty activities.

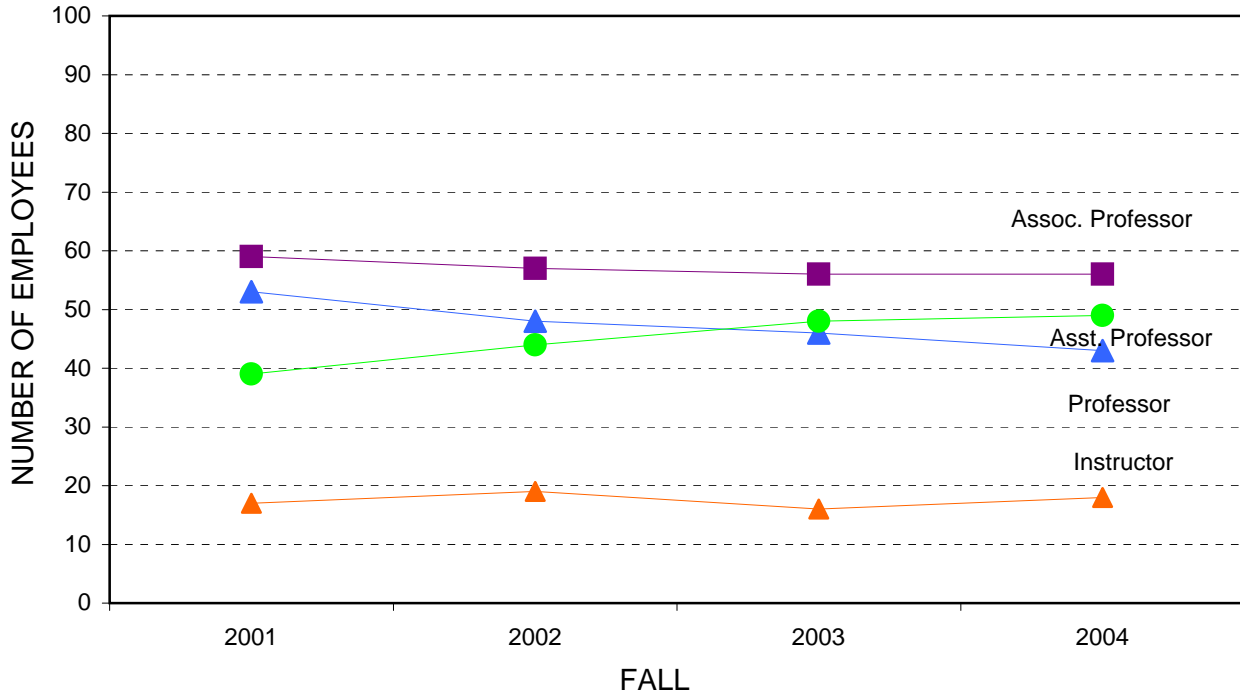
Sources: IPEDS Reports 2001-2004; Common Cost Accounting Reports 2000-2004.

TABLE 2: Staff Description

Fall	Academic Year									
	2000		2001		2002		2003		2004	
	Count	%	Count	%	Count	%	Count	%	Count	%
<b>Ethnicity</b>										
Black	NA	NA	13	5.3%	10	4.0%	10	3.6%	9	3.4%
Native American			2	0.8%	2	0.8%	2	0.7%	1	0.4%
Asian			2	0.8%	3	1.2%	4	1.5%	4	1.5%
Hispanic			2	0.8%	2	0.8%	2	0.7%	2	0.7%
<i>All Minority</i>			19	7.7%	17	6.8%	18	6.6%	16	6.0%
<i>International</i>			0	0.0%	0	0.0%	0	0.0%	1	0.4%
White			228	92.3%	234	93.2%	256	93.4%	251	93.7%
<b>Gender</b>										
Female			128	51.8%	131	52.2%	149	54.4%	126	47.0%
Male			119	48.2%	120	47.8%	125	45.6%	113	42.2%
<b>Status</b>										
Full-Time			234	94.7%	239	95.2%	235	85.8%	232	86.6%
Part-Time			13	5.3%	12	4.8%	39	14.2%	7	2.6%
<b>Category</b>										
Management			23	9.3%	22	8.8%	22	8.0%	22	8.2%
Other Professional			83	33.6%	90	35.9%	115	42.0%	92	34.3%
Admin. Support			58	23.5%	57	22.7%	54	19.7%	78	29.1%
Technical/Parapro.			16	6.5%	17	6.8%	17	6.2%	12	4.5%
Service			67	27.1%	65	25.9%	66	24.1%	64	23.9%
<b>Staff Total</b>	NA		247		251		274		268	

Sources: IPEDS Reports 2001-2004

## FACULTY RANK



## STAFFING LEVELS BY CLASSIFICATION

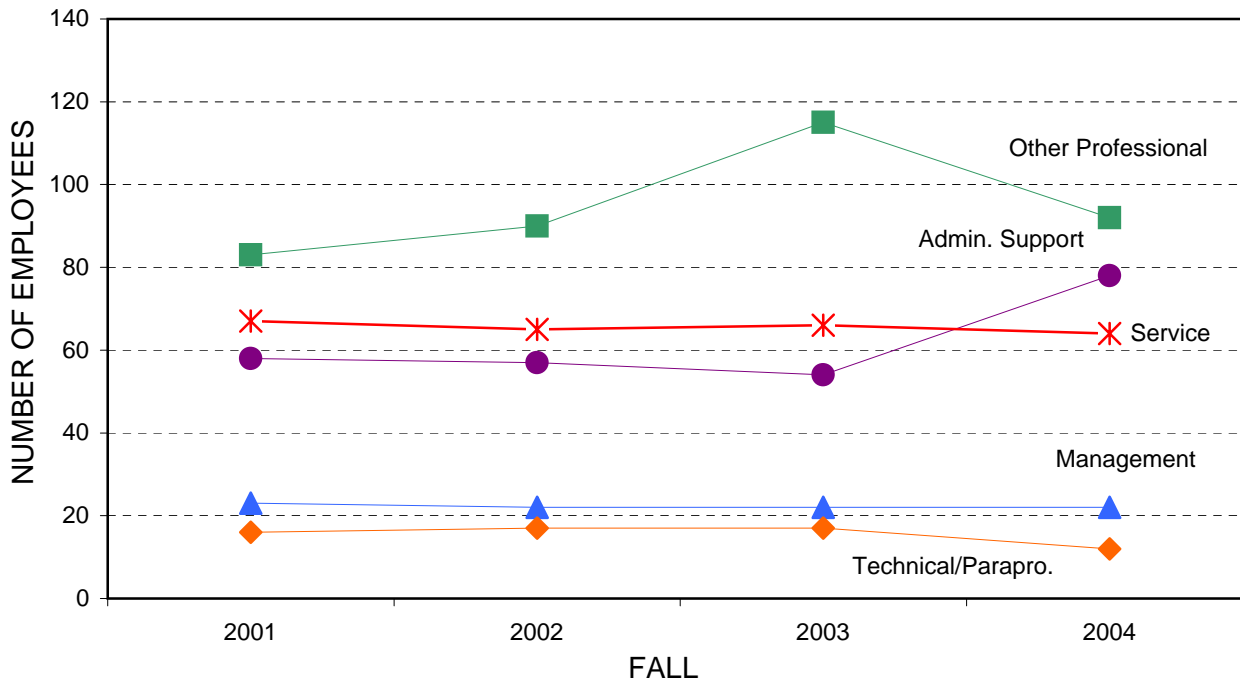


TABLE 3: Applicants of First-Time Freshmen<sup>1</sup>

Cohort	Entering in Fall				
	2000	2001	2002	2003	2004
<b>Pennsylvania Only</b>					
Applications	1,467	1,618	1,615	1,834	2,014
Acceptances	1,133	1,229	1,242	1,437	1,488
Enrollments	524	528	540	569	591
% Accepted	77.2%	76.0%	76.9%	78.4%	73.9%
% Accepted Enrolled	46.2%	43.0%	43.5%	39.6%	39.7%
<b>Non Residents</b>					
Applications	549	527	644	502	542
Acceptances	390	352	425	346	381
Enrollments	127	122	127	102	105
% Accepted	71.0%	66.8%	66.0%	68.9%	70.3%
% Accepted Enrolled	32.6%	34.7%	29.9%	29.5%	27.6%
<b>Total</b>					
Applications	2,016	2,145	2,259	2,336	2,556
Acceptances	1,523	1,581	1,667	1,783	1,869
Enrollments	651	650	667	671	696
% Accepted	75.5%	73.7%	73.8%	76.3%	73.1%
% Accepted Enrolled	42.7%	41.1%	40.0%	37.6%	37.2%

<sup>1</sup> Freshmen include cohort plus new Associate degree seekers with full-time or part-time status..

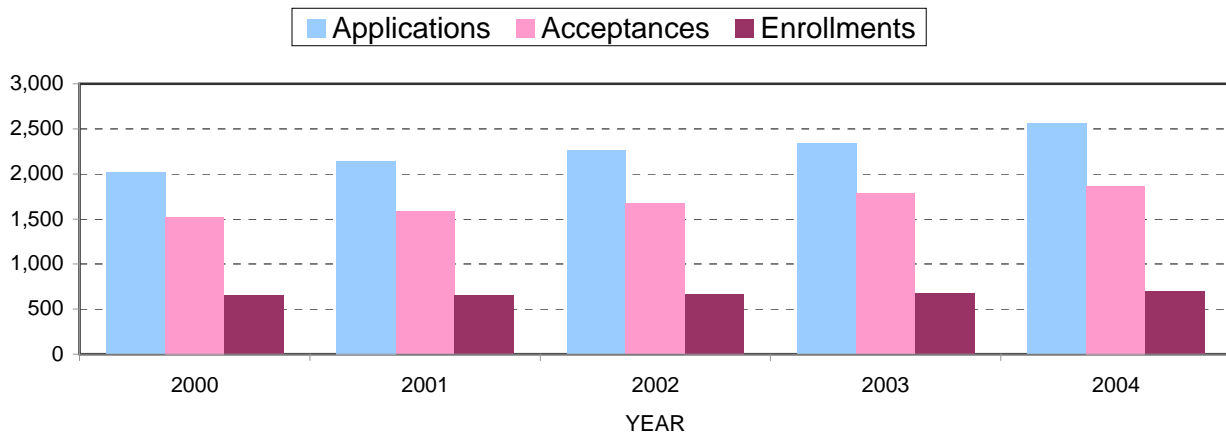


TABLE 4: Cohort Freshmen Profile<sup>1</sup>

Cohort	Entering in Fall									
	2000		2001		2002		2003		2004	
	Count	%	Count	%	Count	%	Count	%	Count	%
<b>Ethnicity</b>										
Black	22	3.6%	25	4.1%	49	7.7%	52	7.9%	62	9.6%
Native American	11	1.8%	4	0.6%	5	0.8%	4	0.6%	7	1.1%
Asian	4	0.7%	1	0.2%	4	0.6%	6	0.9%	5	0.8%
Hispanic	5	0.8%	9	1.5%	4	0.6%	12	1.8%	13	2.0%
<i>All Minority</i>	<b>42</b>	<b>6.8%</b>	<b>39</b>	<b>6.3%</b>	<b>62</b>	<b>10.1%</b>	<b>74</b>	<b>12.1%</b>	<b>87</b>	<b>13.4%</b>
White	563	91.7%	570	92.5%	566	89.4%	571	86.9%	544	83.8%
International	9	1.5%	7	1.1%	4	0.6%	3	0.5%	0	0.0%
Unreported	0	0.0%	0	0.0%	1	0.2%	9	1.4%	18	2.8%
<b>Gender</b>										
Female	347	56.5%	347	56.3%	362	57.2%	385	58.6%	376	57.9%
Male	267	43.5%	269	43.7%	271	42.8%	272	41.4%	273	42.1%
<b>Age</b>										
18 or younger	461	75.1%	504	81.8%	492	77.7%	509	77.5%	385	59.3%
over 18	153	24.9%	112	18.2%	141	22.3%	148	22.5%	264	40.7%
<b>SAT Comb</b>										
Below 800	23	3.9%	23	3.9%	31	5.0%	24	3.8%	25	4.0%
801-900	148	25.0%	152	25.5%	155	25.2%	177	28.0%	171	27.3%
901-1000	191	32.3%	180	30.2%	189	30.8%	191	30.2%	166	26.5%
1001-1100	138	23.4%	150	25.2%	142	23.1%	132	20.9%	146	23.3%
1100 and up	91	15.4%	91	15.3%	97	15.8%	108	17.1%	118	18.8%
<i>Mean</i>	<b>979.43</b>		<b>981.00</b>		<b>978.00</b>		<b>979.00</b>		<b>988.12</b>	
<i>Median</i>	<b>970.00</b>		<b>970.00</b>		<b>970.00</b>		<b>960.00</b>		<b>970.00</b>	
<b>High School Rank</b>										
Top 10%	43	7.7%	42	7.3%	50	9.1%	40	8.0%	55	9.5%
Top 11-25%	110	19.7%	114	19.8%	92	16.8%	98	19.6%	104	17.9%
Top 26-50%	192	34.4%	204	35.5%	190	34.6%	162	32.5%	204	35.2%
Bottom 50%	213	38.2%	215	37.4%	217	39.5%	199	39.9%	217	37.4%
<b>Living on Campus</b>										
	500	81.4%	518	84.1%	520	82.1%	527	80.2%	541	83.4%
<b>First Generation</b>										
	236	42.6%	216	38.1%	233	40.3%	250	41.3%	238	40.5%
<b>Total</b>										
	614		616		632		648		649	

<sup>1</sup> Cohort refers to those who entered in fall semester as first-time, full-time, Bachelor degree-seeking students.

Source: Cohort files of Institutional Research, proved by PaSSHE.

TABLE 5: Cohort Freshmen By PA County

Cohort	Entering in Fall									
	2000		2001		2002		2003		2004	
	Count	%	Count	%	Count	%	Count	%	Count	%
<b>County</b>										
Adams	2	0.4%	1	0.2%	5	1.0%	0	0.0%	4	0.7%
Allegheny	0	0.0%	4	0.8%	8	1.6%	11	2.0%	0	0.0%
Armstrong	0	0.0%	0	0.0%	2	0.4%	1	0.2%	1	0.2%
Beaver	1	0.2%	2	0.4%	4	0.8%	0	0.0%	0	0.0%
Bedford	1	0.2%	0	0.0%	0	0.0%	0	0.0%	1	0.2%
Berks	15	3.1%	13	2.6%	9	1.8%	22	3.9%	11	2.0%
Blair	4	0.8%	4	0.8%	4	0.8%	5	0.9%	3	0.5%
Bradford	62	12.8%	67	13.5%	68	13.4%	72	12.9%	85	15.5%
Bucks	5	1.0%	3	0.6%	5	1.0%	12	2.1%	23	4.2%
Butler	0	0.0%	1	0.2%	1	0.2%	2	0.4%	1	0.2%
Cambria	2	0.4%	1	0.2%	7	1.4%	0	0.0%	1	0.2%
Cameron	0	0.0%	1	0.2%	1	0.2%	0	0.0%	0	0.0%
Carbon	4	0.8%	4	0.8%	5	1.0%	2	0.4%	3	0.5%
Centre	0	0.0%	1	0.2%	5	1.0%	2	0.4%	2	0.4%
Chemung	0	0.0%	1	0.2%	0	0.0%	0	0.0%	0	0.0%
Chester	8	1.6%	4	0.8%	5	1.0%	7	1.3%	6	1.1%
Clarion	1	0.2%	0	0.0%	1	0.2%	1	0.2%	0	0.0%
Clearfield	4	0.8%	2	0.4%	0	0.0%	3	0.5%	3	0.5%
Clinton	2	0.4%	2	0.4%	3	0.6%	1	0.2%	3	0.5%
Columbia	4	0.8%	13	2.6%	7	1.4%	9	1.6%	4	0.7%
Crawford	2	0.4%	2	0.4%	3	0.6%	1	0.2%	3	0.5%
Cumberland	3	0.6%	4	0.8%	0	0.0%	9	1.6%	9	1.6%
Cumberia	0	0.0%	0	0.0%	8	1.6%	0	0.0%	0	0.0%
Dauphin	7	1.4%	15	3.0%	8	1.6%	15	2.7%	11	2.0%
Delaware	1	0.2%	4	0.8%	5	1.0%	13	2.3%	8	1.5%
Elk	2	0.4%	0	0.0%	1	0.2%	0	0.0%	3	0.5%
Erie	2	0.4%	8	1.6%	4	0.8%	6	1.1%	2	0.4%
Forest	0	0.0%	2	0.4%	0	0.0%	1	0.2%	0	0.0%
Fairfax	0	0.0%	0	0.0%	0	0.0%	0	0.0%	1	0.2%
Franklin	1	0.2%	1	0.2%	4	0.8%	3	0.5%	3	0.5%
Fulton	0	0.0%	0	0.0%	0	0.0%	3	0.5%	0	0.0%
Greene	0	0.0%	1	0.2%	0	0.0%	0	0.0%	0	0.0%
Huntingdon	3	0.6%	2	0.4%	2	0.4%	5	0.9%	2	0.4%
Indiana	0	0.0%	0	0.0%	0	0.0%	1	0.2%	0	0.0%
Jefferson	1	0.2%	2	0.4%	3	0.6%	0	0.0%	0	0.0%
Juniata	2	0.4%	0	0.0%	0	0.0%	1	0.2%	0	0.0%
Lackawanna	12	2.5%	33	6.6%	16	3.1%	21	3.8%	8	1.5%
Lancaster	13	2.7%	11	2.2%	7	1.4%	14	2.5%	10	1.8%
Lawrence	0	0.0%	1	0.2%	0	0.0%	0	0.0%	0	0.0%
Lebanon	2	0.4%	5	1.0%	1	0.2%	6	1.1%	5	0.9%
Lehigh	4	0.8%	7	1.4%	3	0.6%	5	0.9%	12	2.2%

TABLE 5: Cohort Freshmen By PA County

Cohort	Entering in Fall									
	2000		2001		2002		2003		2004	
	Count	%	Count	%	Count	%	Count	%	Count	%
<b>County</b>										
Luzerne	15	3.1%	20	4.0%	13	2.6%	15	2.7%	9	1.6%
Lycoming	23	4.7%	16	3.2%	22	4.3%	25	4.5%	29	5.3%
McKean	7	1.4%	3	0.6%	2	0.4%	9	1.6%	7	1.3%
Mercer	0	0.0%	0	0.0%	1	0.2%	0	0.0%	0	0.0%
Mifflin	2	0.4%	3	0.6%	0	0.0%	1	0.2%	4	0.7%
Monroe	5	1.0%	11	2.2%	4	0.8%	3	0.5%	6	1.1%
Montgomery	10	2.1%	5	1.0%	17	3.3%	19	3.4%	14	2.6%
Montour	3	0.6%	4	0.8%	1	0.2%	3	0.5%	2	0.4%
New London	0	0.0%	0	0.0%	0	0.0%	0	0.0%	1	0.2%
Northampton	13	2.7%	5	1.0%	7	1.4%	6	1.1%	11	2.0%
Northumberland	17	3.5%	17	3.4%	6	1.2%	9	1.6%	6	1.1%
Perry	5	1.0%	7	1.4%	3	0.6%	0	0.0%	3	0.5%
Philadelphia	9	1.9%	19	3.8%	20	3.9%	28	5.0%	51	9.3%
Pike	2	0.4%	1	0.2%	3	0.6%	2	0.4%	8	1.5%
Polk	0	0.0%	1	0.2%	0	0.0%	0	0.0%	0	0.0%
Potter	21	4.3%	13	2.6%	17	3.3%	12	2.1%	15	2.7%
Schuylkill	11	2.3%	13	2.6%	9	1.8%	7	1.3%	11	2.0%
Snyder	5	1.0%	0	0.0%	3	0.6%	7	1.3%	5	0.9%
Somerset	0	0.0%	1	0.2%	1	0.2%	1	0.2%	1	0.2%
Sullivan	1	0.2%	9	1.8%	2	0.4%	7	1.3%	5	0.9%
Susquehanna	11	2.3%	11	2.2%	21	4.1%	14	2.5%	14	2.6%
Tioga	107	22.1%	80	16.1%	100	19.6%	111	19.8%	80	14.6%
Union	3	0.6%	4	0.8%	7	1.4%	5	0.9%	5	0.9%
Venango	2	0.4%	0	0.0%	1	0.2%	1	0.2%	0	0.0%
Warren	2	0.4%	5	1.0%	1	0.2%	1	0.2%	4	0.7%
Washington	0	0.0%	0	0.0%	0	0.0%	2	0.4%	1	0.2%
Wayne	17	3.5%	10	2.0%	8	1.6%	5	0.9%	11	2.0%
Westmoreland	1	0.2%	0	0.0%	2	0.4%	2	0.4%	1	0.2%
Wyoming	8	1.6%	8	1.6%	7	1.4%	1	0.2%	5	0.9%
York	15	3.1%	10	2.0%	26	5.1%	10	1.8%	11	2.0%
<b>Total</b>	<b>485</b>		<b>498</b>		<b>509</b>		<b>560</b>		<b>548</b>	
<b>% PA Cohort</b>	<b>614</b>	<b>79.0%</b>	<b>616</b>	<b>80.8%</b>	<b>633</b>	<b>80.4%</b>	<b>657</b>	<b>85.2%</b>	<b>649</b>	<b>84.4%</b>

Note: Top five counties are highlighted in Green and based on the total count of last five years. They not necessarily the top five in a particular year.

TABLE 6: Cohort Freshmen Majors by Department

Cohort		Entering in Fall				
		2000	2001	2002	2003	2004
<b>Department</b>						
Liberal Studies (AHD)	Count	0	2	0	1	1
	%	0.0%	0.3%	0.0%	0.2%	0.2%
Art	Count	16	11	16	20	8
	%	2.6%	1.8%	2.5%	3.0%	1.2%
Biology	Count	26	40	43	35	51
	%	4.2%	6.5%	6.8%	5.3%	7.9%
Business & Economics	Count	41	45	29	42	49
	%	6.7%	7.3%	4.6%	6.4%	7.6%
Chemistry & Physics	Count	12	10	9	14	17
	%	2.0%	1.6%	1.4%	2.1%	2.6%
Communication & Theatre	Count	43	48	46	35	28
	%	7.0%	7.8%	7.3%	5.3%	4.3%
Criminal Justice	Count	47	47	51	53	48
	%	7.7%	7.7%	8.1%	8.1%	7.4%
Education	Count	52	70	80	76	55
	%	8.5%	11.4%	12.6%	11.6%	8.5%
Geography & Geology	Count	4	4	9	5	2
	%	0.7%	0.7%	1.4%	0.8%	0.3%
History & Political Science	Count	21	21	25	14	23
	%	3.4%	3.4%	3.9%	2.1%	3.5%
Language & Literature	Count	14	12	14	20	16
	%	2.3%	2.0%	2.2%	3.0%	2.5%
Library & Information Tech.	Count	0	0	0	0	0
	%	0.0%	0.0%	0.0%	0.0%	0.0%
Mathematics & Computer Sci.	Count	38	21	24	26	20
	%	6.2%	3.4%	3.8%	4.0%	3.1%
Music	Count	80	62	55	59	63
	%	13.0%	10.1%	8.7%	9.0%	9.7%

TABLE 6: Cohort Freshmen Majors by Department

Cohort		Entering in Fall				
		2000	2001	2002	2003	2004
<b>Department</b>						
Philosophy	Count	5	1	6	7	0
	%	0.8%	0.2%	0.9%	1.1%	0.0%
Psychology	Count	16	19	20	27	23
	%	2.6%	3.1%	3.2%	4.1%	3.5%
RP Health Sciences	Count	19	31	33	48	51
	%	3.1%	5.0%	5.2%	7.3%	7.9%
Social Work & Anthro. & Socio.	Count	11	9	7	10	11
	%	1.8%	1.5%	1.1%	1.5%	1.7%
Undeclared	Count	169	163	166	165	183
	%	27.5%	26.5%	26.2%	25.1%	28.2%
<b>Total</b>						
	Count	<b>614</b>	<b>616</b>	<b>633</b>	<b>657</b>	<b>649</b>
	%	100.0%	100.0%	100.0%	100.0%	100.0%
<b>Top Five Majors by Department</b>						
<i>1 Education</i>		52	70	80	76	55
<i>2 Music</i>		80	62	55	59	63
<i>3 Criminal Justice</i>		41	45	29	42	49
<i>4 Business &amp; Economics</i>		41	45	29	42	49
<i>5 Communication &amp; Theatre</i>		43	48	46	35	28

Note: Top five majors are based on total count of five years for a department and they are not necessarily the top five in a particular year.

TABLE 7: New Transfer Students of Prior Colleges by State

	2000		2001		Fall 2002		2003		2004	
	Count	%	Count	%	Count	%	Count	%	Count	%
<b><i>Top 10 Prior Colleges</i></b>										
Corning Com. Col.	58	27.5%	60	24.1%	69	27.6%	70	27.3%	57	26.1%
Penn.Tech College	12	5.7%	27	10.8%	12	4.8%	16	6.3%	10	4.6%
Penn State Univ.	8	3.8%	10	4.0%	17	6.8%	14	5.5%	13	6.0%
Lock Haven Univ.	9	4.3%	5	2.0%	6	2.4%	8	3.1%	9	4.1%
Lackawanna Col.	3	1.4%	11	4.4%	6	2.4%	8	3.1%	7	3.2%
Broome Com. Col.	5	2.4%	3	1.2%	12	4.8%	6	2.3%	2	0.9%
Bloomsburg Univ.	2	0.9%	5	2.0%	8	3.2%	5	2.0%	7	3.2%
Harrisburg Com. Col.	2	0.9%	2	0.8%	2	0.8%	7	2.7%	6	2.8%
Com. C. Phila	3	1.4%	2	0.8%	3	1.2%	2	0.8%	4	1.8%
Luzerne CCC	2	0.9%	2	0.8%	3	1.2%	4	1.6%	3	1.4%
<b><i>Top Ten Total</i></b>	<b>104</b>	<b>49.3%</b>	<b>127</b>	<b>51.0%</b>	<b>138</b>	<b>55.2%</b>	<b>140</b>	<b>54.7%</b>	<b>118</b>	<b>54.1%</b>
Other Colleges	107	50.7%	122	49.0%	112	44.8%	116	45.3%	100	45.9%
<b><i>Top Five States of Transfer Students</i></b>										
Pennsylvania	82	38.9%	107	43.0%	108	43.2%	102	39.8%	100	45.9%
New York	94	44.5%	102	41.0%	107	42.8%	113	44.1%	80	36.7%
Maryland	3	1.4%	5	2.0%	4	1.6%	3	1.2%	4	1.8%
New Jersey	4	1.9%	0	0.0%	4	1.6%	3	1.2%	3	1.4%
Florida	2	0.9%	2	0.8%	4	1.6%	4	1.6%	0	0.0%
<b><i>Top Five Total</i></b>	<b>185</b>	<b>87.7%</b>	<b>216</b>	<b>86.7%</b>	<b>227</b>	<b>90.8%</b>	<b>225</b>	<b>87.9%</b>	<b>187</b>	<b>85.8%</b>
Other states	13	6.2%	27	10.8%	20	8.0%	28	10.9%	23	10.6%
Armed Forces	0	0.0%	0	0.0%	0	0.0%	2	0.8%	0	0.0%
Unknown	13	6.2%	6	2.4%	3	1.2%	1	0.4%	8	3.7%
<b><i>Total Transfer</i></b>	<b>211</b>		<b>249</b>		<b>250</b>		<b>256</b>		<b>218</b>	

Note: Top ten prior colleges and top five states are based on total count of last five years for a college or a state and they are not necessary to be the top ten or top five in a particular year.

TABLE 8: All Undergraduate Students Profile

	Academic Year									
	2000-01		2001-02		2002-03		2003-04		2004-05	
	Fall	Spring	Fall	Spring	Fall	Spring	Fall	Spring	Fall	Spring
<b>Ethnicity</b>										
Black	104	88	104	91	128	113	145	127	198	150
Native American	24	19	24	19	23	26	30	29	30	21
Asian	16	17	17	18	17	13	21	20	25	15
Hispanic	23	20	26	25	25	26	30	27	38	33
<i>All Minority</i>	167	144	171	153	193	178	226	203	291	219
White	2,683	2,430	2,806	2,532	2,824	2,600	2,908	2,562	2,735	2,420
International	40	39	41	39	40	34	34	34	44	80
Unreported	0	0	0	0	0	0	0	35	57	64
<i>% Minority Stu.</i>	5.8%	5.5%	5.7%	5.6%	6.3%	6.3%	7.1%	7.2%	9.3%	7.9%
<b>Gender</b>										
Female	1,716	1,560	1,792	1,635	1,863	1,730	1,946	1,730	1,914	1,729
Male	1,174	1,053	1,226	1,089	1,194	1,082	1,222	1,104	1,213	1,054
<i>% Female Stu.</i>	59.4%	59.7%	59.4%	60.0%	60.9%	61.5%	61.4%	61.0%	61.2%	62.1%
<b>Status</b>										
Full-Time	2,588	2,314	2,690	2,439	2,767	2,528	2,894	2,591	2,813	2,464
Part-Time	302	299	328	285	290	284	274	243	314	319
<i>% Full-Time Stu.</i>	89.6%	88.6%	89.1%	89.5%	90.5%	89.9%	91.4%	91.4%	90.0%	88.5%
<b>Age</b>										
Under 18	52	16	49	15	69	21	55	10	55	11
18-24	2,346	2,117	2,450	2,201	2,462	2,263	2,566	2,305	2,542	2,288
Over 24	479	480	519	508	526	528	547	516	528	484
Missing	13							3	2	
<i>% Traditional Stu.</i>	83.0%	81.6%	82.8%	81.4%	82.8%	81.2%	82.7%	81.7%	83.1%	82.6%
<b>On Campus</b>										
Count	1,459	1,198	1,441	1,232	1,486	1,269	1,538	1,308	1,438	1,209
<i>Percent</i>	50.5%	45.8%	47.7%	45.2%	48.6%	45.1%	48.5%	46.2%	46.0%	43.4%
<b>Total Enrolled</b>	2,890	2,613	3,018	2,724	3,057	2,812	3,168	2,834	3,127	2,783

TABLE 9: Graduate Students Profile

	Academic Year									
	2000-01		2001-02		2002-03		2003-04		2004-05	
	Fall	Spring	Fall	Spring	Fall	Spring	Fall	Spring	Fall	Spring
<b>Ethnicity</b>										
Black	1	1	0	1	4	5	3	2	6	10
Native American	0	0	1	2	5	6	5	5	2	2
Asian	1	1	0	0	1	1	3	4	6	3
Hispanic	2	5	4	4	6	7	4	3	4	3
<i>All Minority</i>	4	7	5	7	16	19	15	14	18	18
White	218	224	278	276	294	301	336	321	400	397
International	1	1	2	2	1	1	1	3	0	3
Unreported	0	0	0	0	0	0	0	7	11	10
<b>Gender</b>										
Female	162	175	231	220	250	253	282	271	338	344
Male	61	57	54	65	61	68	70	74	91	84
<b>Status</b>										
Full-Time	63	55	55	64	72	91	88	85	105	103
Part-Time	160	177	230	221	239	230	264	260	324	325
<b>Age</b>										
18-24	44	36	32	44	47	52	53	56	68	70
Over 24	179	196	253	241	264	269	299	289	361	358
<b>On Campus</b>										
	7	9	5	5	4	6	8	8	6	8
<b>Total Enrolled</b>										
	223	232	285	285	311	321	352	345	429	428

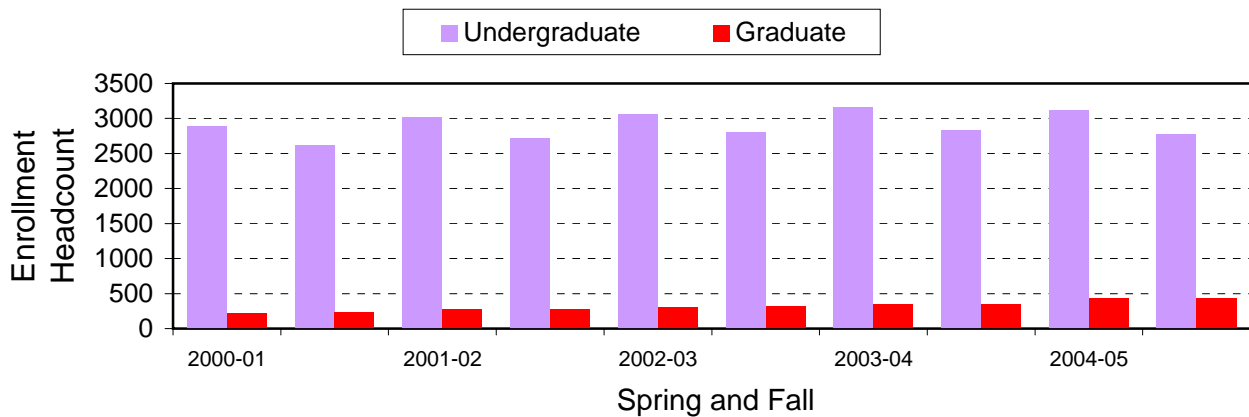


TABLE 10: Enrollment History

	Tot. Summer Headcount	Distance Learning <sup>1</sup>	Undergraduate Headcount	Graduate Headcount	Total Fall FTE	Total Fall Headcount	Annual % Change
1992			2,915	308	3,031	3,223	
1993			2,891	332	2,994	3,223	0.0%
1994			2,698	294	2,798	2,992	-7.2%
1995			2,667	287	2,733	2,954	-1.3%
1996			2,684	213	2,697	2,897	-1.9%
1997			2,698	209	2,680	2,907	0.3%
1998	946	226	2,810	169	2,744	2,979	2.5%
1999	817	151	2,891	172	2,771	3,063	2.8%
2000	945	419	2,891	222	2,817	3,113	1.6%
2001	1,088	1,310	3,019	284	2,953	3,303	6.1%
2002	1,308	2,130	3,057	311	3,048	3,368	2.0%
2003	1,397	2,899	3,168	352	3,115	3,520	4.5%
2004	1,425	2,923	3,127	429	3,070	3,556	1.0%

<sup>1</sup> The headcount of Distance Learning was annual enrollment (fall, spring and summer). The total fall headcount includes both on-campus and distance learning enrollment in the fall semester.

### Enrollment History

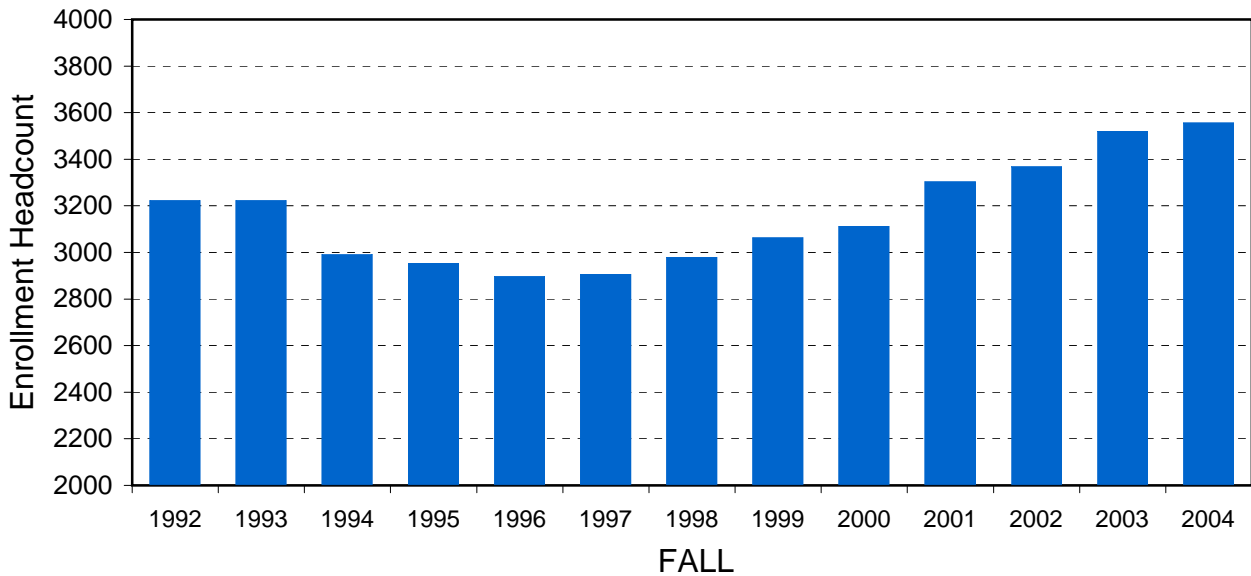


TABLE 11: Major/Minor by Department

		Academic Year				
		2000-01	2001-02	2002-03	2003-04	2004-05
<b>Department</b>						
Liberal Studies (AHD)	Major	62	81	72	69	66
	Minor	NA				
	<i>% Change<sup>1</sup></i>		30.6%	-11.1%	-4.2%	-4.3%
Art	Major	92	86	108	126	97
	Minor		5	6	16	14
	<i>% Change</i>		-6.5%	25.6%	16.7%	-23.0%
Biology	Major	163	145	174	180	184
	Minor	NA	8	8	8	8
	<i>% Change</i>		-11.0%	20.0%	3.4%	2.2%
Business & Economics	Major	349	372	356	359	340
	Minor		60	79	76	57
	<i>% Change</i>		6.6%	-4.3%	0.8%	-5.3%
Chemistry & Physics	Major	47	43	45	58	67
	Minor	NA	16	29	52	57
	<i>% Change</i>		-8.5%	4.7%	28.9%	15.5%
Communication & Theatre	Major	192	214	218	222	193
	Minor	NA	2	4	13	13
	<i>% Change</i>		11.5%	1.9%	1.8%	-13.1%
Criminal Justice	Major	335	333	295	313	336
	Minor		20	20	15	12
	<i>% Change</i>		-0.6%	-11.4%	6.1%	7.3%
Education	Major	665	753	812	784	706
	Minor	NA				
	<i>% Change</i>		13.2%	7.8%	-3.4%	-9.9%
Geography & Geology	Major	70	72	72	66	70
	Minor	NA	29	26	18	14
	<i>% Change</i>		2.9%	0.0%	-8.3%	6.1%
History & Political Science	Major	108	114	135	127	147
	Minor	NA	17	18	19	28
	<i>% Change</i>		5.6%	18.4%	-5.9%	15.7%
Language & Literature	Major	89	101	116	122	118
	Minor	NA	47	50	44	51
	<i>% Change</i>		13.5%	14.9%	5.2%	-3.3%

TABLE 11: Major/Minor by Department

		Academic Year				
		2000-01	2001-02	2002-03	2003-04	2004-05
<b>Department</b>						
Library & Information Tech.	Major	65	117	152	207	255
	Minor	NA				
	% Change		80.0%	29.9%	36.2%	23.2%
Mathematics & Computer Sci.	Major	198	183	164	161	153
	Minor	NA	39	42	54	36
	% Change		-7.6%	-10.4%	-1.8%	-5.0%
Music	Major	246	242	246	256	266
	Minor	NA	19	19	11	8
	% Change		-1.6%	1.7%	4.1%	3.9%
Philosophy	Major	21	21	20	26	22
	Minor	NA	14	19	20	23
	% Change		0.0%	-4.8%	30.0%	-15.4%
Psychology	Major	167	160	176	178	171
	Minor	NA	55	56	56	61
	% Change		-4.2%	10.0%	1.1%	-3.9%
RP Health Sciences	Major	234	231	267	305	351
	Minor	NA				
	% Change		-1.3%	15.6%	14.2%	15.1%
Social Work & Anthro. & Socio.	Major	123	114	135	159	189
	Minor	NA	32	33	37	56
	% Change		-7.3%	18.4%	17.8%	18.9%
<b>Other</b>						
Center for Life Long Learning	Major	240	219	222	252	303
	% Change		-8.8%	1.4%	13.5%	20.2%
Graduate Studies	Major	84	90	70	42	62
	% Change		7.1%	-22.2%	-40.0%	49.8%
Undeclared	Major	443	424	464	451	460
	% Change		-4.3%	9.4%	-2.8%	2.0%
<b>Total<sup>2</sup></b>	Major	<b>3,993</b>	<b>4,115</b>	<b>4,319</b>	<b>4,463</b>	<b>4,556</b>
	Minor	<b>NA</b>	<b>363</b>	<b>409</b>	<b>439</b>	<b>438</b>
	% Change		<b>3.1%</b>	<b>5.0%</b>	<b>3.3%</b>	<b>2.1%</b>

<sup>1</sup> % Change refers to the percentage of annual increase or decrease of the enrollment in a major, compared with the previous year.

<sup>2</sup> All counts are unique headcounts who enrolled in both fall and spring semester of each academic year.

TABLE 12: All Students By PA County

Entering in Fall										
	2000		2001		2002		2003		2004	
	Count	%	Count	%	Count	%	Count	%	Count	%
<b>PA County</b>										
Adams	11	0.4%	8	0.3%	9	0.4%	6	0.2%	9	0.3%
Allegheny	2	0.1%	7	0.3%	15	0.6%	30	1.1%	24	0.9%
Armstrong	0	0.0%	1	0.0%	2	0.1%	3	0.1%	5	0.2%
Beaver	1	0.0%	3	0.1%	6	0.2%	3	0.1%	2	0.1%
Bedford	4	0.2%	2	0.1%	1	0.0%	1	0.0%	2	0.1%
Berks	56	2.3%	58	2.3%	51	2.0%	60	2.2%	46	1.7%
Blair	13	0.5%	14	0.6%	16	0.6%	16	0.6%	16	0.6%
Bradford	439	17.9%	463	18.3%	505	19.7%	520	19.4%	515	19.0%
Bucks	32	1.3%	30	1.2%	22	0.9%	25	0.9%	46	1.7%
Butler	4	0.2%	4	0.2%	3	0.1%	8	0.3%	8	0.3%
Cambria	2	0.1%	5	0.2%	11	0.4%	5	0.2%	8	0.3%
Cameron	8	0.3%	6	0.2%	6	0.2%	5	0.2%	1	0.0%
Carbon	16	0.7%	18	0.7%	15	0.6%	16	0.6%	14	0.5%
Centre	9	0.4%	11	0.4%	14	0.5%	15	0.6%	17	0.6%
Chester	25	1.0%	16	0.6%	16	0.6%	22	0.8%	19	0.7%
Clarion	8	0.3%	1	0.0%	1	0.0%	4	0.1%	2	0.1%
Clearfield	13	0.5%	9	0.4%	8	0.3%	9	0.3%	8	0.3%
Clinton	21	0.9%	22	0.9%	16	0.6%	14	0.5%	19	0.7%
Columbia	18	0.7%	23	0.9%	22	0.9%	29	1.1%	32	1.2%
Crawford	7	0.3%	9	0.4%	8	0.3%	7	0.3%	14	0.5%
Cumberland	13	0.5%	22	0.9%	24	0.9%	20	0.7%	25	0.9%
Dauphin	26	1.1%	33	1.3%	32	1.2%	45	1.7%	48	1.8%
Delaware	15	0.6%	17	0.7%	14	0.5%	25	0.9%	25	0.9%
Elk	28	1.1%	20	0.8%	22	0.9%	4	0.1%	4	0.1%
Erie	13	0.5%	21	0.8%	20	0.8%	25	0.9%	20	0.7%
Fayette	0	0.0%	0	0.0%	1	0.0%	1	0.0%	0	0.0%
Forest	0	0.0%	2	0.1%	1	0.0%	2	0.1%	1	0.0%
Franklin	6	0.2%	8	0.3%	11	0.4%	9	0.3%	10	0.4%
Fulton	1	0.0%	0	0.0%	0	0.0%	3	0.1%	2	0.1%
Green	1	0.0%	0	0.0%	0	0.0%	0	0.0%	0	0.0%
Huntingdon	7	0.3%	4	0.2%	4	0.2%	11	0.4%	10	0.4%
Indiana	2	0.1%	1	0.0%	1	0.0%	3	0.1%	1	0.0%
Jefferson	7	0.3%	3	0.1%	5	0.2%	3	0.1%	4	0.1%
Juniata	10	0.4%	8	0.3%	4	0.2%	4	0.1%	1	0.0%
Lackawanna	58	2.4%	81	3.2%	68	2.6%	77	2.9%	61	2.2%
Lancaster	46	1.9%	42	1.7%	41	1.6%	51	1.9%	54	2.0%

TABLE 12: All Students By PA County

	Entering in Fall									
	2000		2001		2002		2003		2004	
	Count	%	Count	%	Count	%	Count	%	Count	%
Lawrence	6	0.2%	5	0.2%	1	0.0%	1	0.0%	1	0.0%
Lebanon	14	0.6%	16	0.6%	9	0.4%	17	0.6%	23	0.8%
Lehigh	18	0.7%	17	0.7%	11	0.4%	14	0.5%	24	0.9%
Luzerne	63	2.6%	69	2.7%	62	2.4%	57	2.1%	49	1.8%
Lycoming	110	4.5%	101	4.0%	94	3.7%	101	3.8%	114	4.2%
McKean	32	1.3%	22	0.9%	21	0.8%	24	0.9%	22	0.8%
Mercer	2	0.1%	1	0.0%	2	0.1%	3	0.1%	2	0.1%
Mifflin	8	0.3%	8	0.3%	9	0.4%	10	0.4%	13	0.5%
Monroe	18	0.7%	28	1.1%	24	0.9%	21	0.8%	21	0.8%
Montgomery	40	1.6%	34	1.3%	45	1.8%	52	1.9%	53	2.0%
Montour	6	0.2%	6	0.2%	7	0.3%	13	0.5%	11	0.4%
Northampton	33	1.3%	28	1.1%	32	1.2%	33	1.2%	34	1.3%
Northumberland	64	2.6%	63	2.5%	56	2.2%	57	2.1%	50	1.8%
Perry	12	0.5%	12	0.5%	8	0.3%	7	0.3%	11	0.4%
Philadelphia	65	2.7%	60	2.4%	71	2.8%	77	2.9%	116	4.3%
Pike	13	0.5%	9	0.4%	8	0.3%	10	0.4%	15	0.6%
Potter	80	3.3%	88	3.5%	82	3.2%	91	3.4%	98	3.6%
Schuylkill	40	1.6%	42	1.7%	45	1.8%	40	1.5%	35	1.3%
Snyder	19	0.8%	13	0.5%	15	0.6%	19	0.7%	17	0.6%
Somerset	3	0.1%	4	0.2%	5	0.2%	3	0.1%	3	0.1%
Sullivan	18	0.7%	20	0.8%	23	0.9%	23	0.9%	24	0.9%
Susquehanna	61	2.5%	52	2.1%	61	2.4%	62	2.3%	66	2.4%
Tioga	622	25.4%	688	27.2%	698	27.2%	699	26.1%	692	25.5%
Union	22	0.9%	21	0.8%	23	0.9%	24	0.9%	22	0.8%
Venango	7	0.3%	4	0.2%	3	0.1%	5	0.2%	1	0.0%
Warren	18	0.7%	14	0.6%	8	0.3%	6	0.2%	11	0.4%
Washington	0	0.0%	1	0.0%	1	0.0%	5	0.2%	6	0.2%
Wayne	54	2.2%	52	2.1%	46	1.8%	32	1.2%	30	1.1%
Westmoreland	6	0.2%	6	0.2%	8	0.3%	8	0.3%	8	0.3%
Wyoming	25	1.0%	21	0.8%	22	0.9%	14	0.5%	16	0.6%
York	46	1.9%	53	2.1%	72	2.8%	65	2.4%	52	1.9%
<b>PA Total</b>	<b>2447</b>	<b>100.0%</b>	<b>2530</b>	<b>100.0%</b>	<b>2567</b>	<b>100.0%</b>	<b>2674</b>	<b>100.0%</b>	<b>2713</b>	<b>100.0%</b>

TABLE 12: All Students By PA County

Entering in Fall										
	2000		2001		2002		2003		2004	
	Count	%	Count	%	Count	%	Count	%	Count	%
<b>Residential Status</b>										
In-State	2,447	78.6%	2,530	76.6%	2,567	76.2%	2,674	76.0%	2,713	76.3%
Out-State	625	20.1%	730	22.1%	760	22.6%	787	22.4%	760	21.4%
Foreign	41	1.3%	43	1.3%	41	1.2%	59	1.7%	83	2.3%
<b>Total</b>	<b>3113</b>		<b>3,303</b>		<b>3,368</b>		<b>3,520</b>		<b>3,556</b>	

Note: Top five counties are highlighted in Green and based on the total count of last five years. They are not necessarily the top five in a particular year.

### All Students by Residential Status

