



Developing Tomorrow's Leaders

Fact Book 2007-2008



Member of Pennsylvania's State System of Higher Education

Prepared by
The Office of Institutional Research

This Fact book was created by the Office of Institutional Research to answer frequently asked questions concerning Mansfield University. Unless otherwise indicated, data for all tables were extracted from the freeze data for the appropriate academic and/or fiscal year. Consequently, the Fact Book is updated at the end of each fiscal year.

The Office of Institutional Research wishes to thank all members of the college community who assisted in the production of the Fact Book by providing data, suggesting changes, and preparing tables. Please contact Catherine Renner (crenner@mansfield.edu) or Rob Pinkney (rpinkney@mansfield.edu) with any feedback or questions.

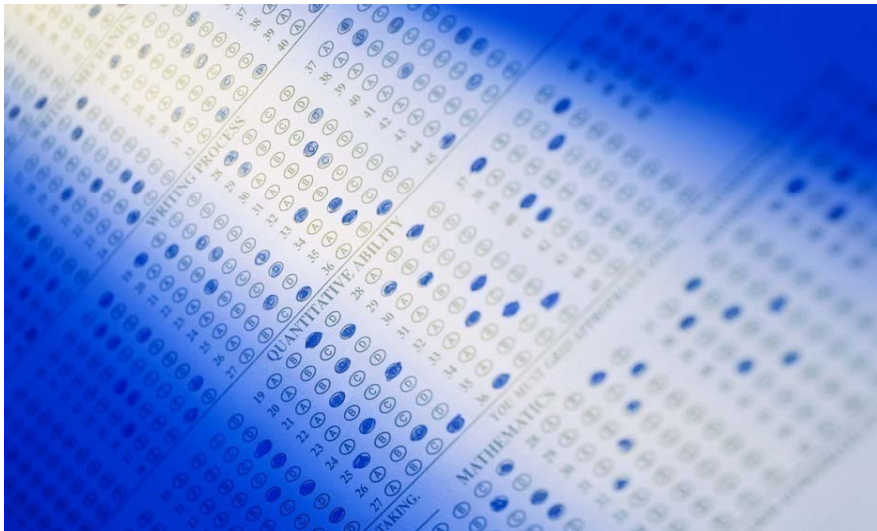


Table of Contents

Section	Page
University Profile	
History, Mission, and Creed	5
Officers of the University	6
Administration and Academic Department Chairs	7
Professional and Program Accreditations	8
Undergraduate Degree and Major Offerings	9
Undergraduate Minor Offerings	10
Graduate Degree and Major Offerings	11
Full-Time Cost of Attendance	12
Admissions	
Undergraduate Admission Application Statistics	14
Graduate Admission Application Statistics	15
Academic Profile	16
Enrollment	
Geographic Origins of All Enrolled Students	
By State	18
By Pennsylvania County	19
By Good Neighbor County	21
By Country	22
Undergraduate Demographics: First-Year Cohort Profile	23
Total Fall Headcount Enrollment and Demographics	24
Primary Major: Undergraduate and Graduate	25
Undergraduate Enrollment by Major (Including Double Majors)	26
Annualized Student and Faculty FTE	28
University Retention and Graduation by Cohort	30
Degrees Conferred	
Degrees Conferred by Degree Type	32
Degrees Conferred by Department, Degree, and Major	33
Faculty and Staff	
Full-Time Employees by Gender and Race/Ethnicity	36
Full-Time Faculty by Gender and Rank	37
Resources, Services, and Facilities	
Campus Technologies	39
Library and Information Resources	40
Advancement	42
Revenues by Source	43
Operating Expenses by Source	44

UNIVERSITY PROFILE

BRIEF HISTORY

Mansfield University traces its heritage back to 1857, when the Mansfield Classical Seminary opened. In 1862, Mansfield became a state normal school. In 1927, it became Mansfield State Teachers College, and in 1960, it broadened its degree offerings and became Mansfield State College. In 1983, it became Mansfield University. As a member of the Pennsylvania State System of Higher Education, Mansfield combines the best qualities of a small liberal arts college with the resources of a comprehensive university.

MISSION AND CREED

From The Mansfield Plan 2003

MISSION

Mansfield University is dedicated to providing an environment that promotes academic and personal growth as well as intellectual, ethical, and aesthetic values. The University serves the region, state, national and international communities by developing human and material resources. The University is committed to stimulating continuous pursuit of knowledge and understanding by students, staff, and faculty. To accomplish this mission, Mansfield University pledges:

- To provide a liberal education for all its students.
- To prepare students for full and purposeful lives through undergraduate and graduate instruction in liberal arts and professional programs.
- To plan, develop, implement, and measure its efforts in providing optimum learning opportunities for students of a variety of ages, backgrounds, and needs.
- To promote affirmative action and equal opportunity.
- To maintain a faculty dedicated to teaching and scholarship.
- To cooperate with other educational institutions for the achievement of mutual goals.
- To provide educational and cultural programs to the general community.
- To offer expertise in public service activities.

THE MANSFIELD CREED

At Mansfield University, we develop leaders. We accomplish this by focusing on the four core values that have been our tradition since 1912: Character, Scholarship, Culture, and Service.

CHARACTER

We believe in integrity. We act with honesty and respect toward others. We take responsibility for our actions and reflect on their impact on ourselves and others.

SCHOLARSHIP

We believe in learning. We use rigorous, responsible, and critical inquiry to understand existing knowledge, acquire and share new knowledge, and apply what we learn. Each of us is both student and teacher.

CULTURE

We believe in celebrating humanity. We enrich ourselves and others by sharing and exploring our similarities and differences. We honor the past as we invent the future.

SERVICE

We believe in helping others. We work with others to improve the communities in which we now live and will touch in the future. Knowledge invests us with the power to improve our world and the responsibility to act.

In 1912, our student body adopted the above words, emphasizing their order: "Character as the essential, Scholarship as the means, Culture as the enrichment, and Service as the end of all worthy endeavor."

Developed by the Leadership Committee of the Focus on Student Learning Forum; last revised May 19th, 2004.

OFFICERS OF THE UNIVERSITY

President

Provost and Vice President for Academic Affairs

Vice President for Finance and Administration

Vice President for College Advancement

Dr. Maravene Loeschke

Dr. Michael J. Renner

Mr. Michael Reid

Mr. Steven Besse

MANSFIELD UNIVERSITY COUNCIL OF TRUSTEES

Chair:

Mr. Ralph H. Meyer

Vice Chair:

Dr. Robert D. Strohecker

Secretary:

Mr. Richard P. Cashman

Members:

Ms. Tessa Bieber, Student

Mr. Thomas A. Browning

Mr. Lewis Lee

Mr. Craig G. Litchfield

Ms. Ada Mae Saxton

Mr. Howard Smith

Ms. Carol J. Tama

ADMINISTRATIVE HEADS, DEANS AND DIRECTORS

Associate Provost	Dr. Deborah Erickson
Associate Vice President for Student Affairs	Mr. James Harrington
Associate Vice President of Residence Life	Mr. Charles Colby
Dean of Faculty (Interim)	Dr. Peter A. Keller
Executive Director of Organizational Development and Employee Relations	Ms. Dia Carleton
Assistant Vice President of Institutional Research and Planning	Dr. Catherine Hackett Renner
Executive Director of Enrollment Services	Mr. Brian Barden
Controller	Mr. Curt Tofts
Director of Alumni Relations	Ms. Denise Berg
Director of Athletics	Mr. Roger Maisner
Director of Budget and Planning	Ms. Joyce Nichols
Director of Campus Technologies	Ms. Connie Beckman
Director of the Career Development Center	Ms. Julia Overton-Healy
Director of the Center for Lifelong Learning	Ms. Susan Sweet
Director of Facilities	Mr. Benjamin Jones
Director of Financial Aid	Ms. Barbara Schmitt
Director of Grants Development	Ms. Betsy Brune
Director of the Leadership Institute	Mr. Dennis Heinle
Director of Library Information Resources	Mr. Scott Dimarco
Director of Police Services and Safety	Ms. Christine Shegan
Director of Printing Services	Mr. Charlie Earle
Director of Public Relations and Publications	Mr. Dennis Miller
Director of Purchasing	Mr. Tekeste Abraham
Director of Student Accounts	Ms. Melanie Seymour

ACADEMIC DEPARTMENT CHAIRS

Art	Dr. Joseph Murphy
Biology	Dr. David Flesch
Business and Economics	Ms. Mary Jane Dugan
Chemistry and Physics	Dr. Shaker Ramasamy
Criminal Justice	Dr. Mark Robarge
Communication and Theatre	Dr. Leroy Wright
Education and Special Education	Mr. Jesus Lucero
Languages and Literature	Dr. John Ulrich
Geography and Geology	Dr. Russell Dodson
History and Political Science	Dr. Andrew Gaskievicz
Math and Computer Information Science	Dr. Howard Iseri
Music	Dr. Adam Brennan
Philosophy	Dr. Robert Timko
Psychology	Dr. Dennis Murray
Robert Packer Health Sciences	Dr. Janeen Sheehe
School Library and Information Technology	Ms. Cynthia Keller
Social Work, Anthropology and Sociology	Dr. Nancy Sidell

Professional and Program Accreditations

Institutional Accreditation

Mansfield University is accredited by The Middle States Association of Colleges and Secondary Schools in Higher Education toward Associates, Bachelor's, Master's, and Specialist degrees.

University Program	Accrediting Organization		Last Review	Current Status	Next Scheduled Review
Dietetics	CADE	Commission on Accreditation for Dietetics Association	2006	Approval	2016
Education	NCATE	National Council for Accreditation of Teacher Education	Spring 2006	Accredited for Undergraduate Programs	Spring 2013
	PDE	Pennsylvania Department of Education	2006	Approved	2010-2011
Medical Technology	NAACLS	National Accreditation Agency for Clinical Laboratory Sciences	Fall 2005	Accredited	2012
Music	NASM	National Association of Schools of Music	2000	Accredited	2009-2010
Nursing	NLNAC	National League for Nursing Accrediting Commission	Spring 2006	Accredited	BSN: Spring 2014 MSN: Spring 2011
Radiologic Technology	JCERT	Joint Review Committee on Education in Radiologic Technology	2001	Accredited	2010
Respiratory Therapy	CAAHEP	Commission on the Accreditation of Allied Health Education Programs	Spring 2006	Accredited	2016
Social Work	CSWE	Council on Social Work Education	2005	Accredited for Undergraduate Programs	Spring 2014

Undergraduate Degree and Major Offerings: Fall 2007

Degree	Program	Department
B.S.E.	Art Education	Art
B.A.	Art History	Art
B.S.	Biology*	Biology
B.S.	Biology: Fisheries	Biology
B.S.	Business Administration	Business and Economics
B.S.E.	Chemistry Education	Chemistry and Physics
B.S.	Chemistry*	Chemistry and Physics
B.S.	Communication	Communication and Theatre
B.S.	Computer and Information Sciences*	Mathematics and Computer Information Science
A.S.	Criminal Justice Administration	Criminal Justice Administration
B.S.	Criminal Justice Administration	Criminal Justice Administration
B.S.E.	Earth and Space Science Education	Geography and Geology
B.S.E.	Elementary Education**	Education and Special Education
B.A.	English	English and Modern Languages
B.S.E.	English Education	English and Modern Languages
B.A.	French	English and Modern Languages
B.S.E.	French Education	English and Modern Languages
A.S.	Geography Mapping and Technology	Geography and Geology
B.S.	Geography*	Geography and Geology
B.A.	German	English and Modern Languages
B.S.E.	German Education	English and Modern Languages
B.A.	History	History and Political Science
A.S.	Information Systems	Mathematics and Computer Information Science
B.S.	Leadership for Children and Adults with Disabilities	Education and Special Education
A.A.	Liberal Studies	Academic and Human Development
B.A.	Liberal Studies	Academic and Human Development
B.S.	Mass Communication*	Communication and Theatre
B.S.	Mathematics	Mathematics and Computer Information Science
B.S.E.	Mathematics Education	Mathematics and Computer Information Science
B.S.	Medical Technology	Biology
B.M.	Music Education	Music
B.M.	Music Performance	Music
B.A.	Music*	Music
B.S.N.	Nursing	Robert Packer Health Sciences
B.S.N.	Nursing (R.N. to B.S.N)	Robert Packer Health Sciences
B.S.	Nutrition*	Robert Packer Health Sciences
B.A.	Philosophy*	Philosophy
B.S.E.	Physics Education	Chemistry and Physics
B.S.	Physics*	Chemistry and Physics
B.S.	Psychology*	Psychology
A.A.S.	Radiology Technology	Robert Packer Health Sciences
A.A.S.	Respiratory Therapy	Robert Packer Health Sciences
B.S.E.	Social Studies: History	History and Political Science
B.S.W.	Social Work	Social Work, Anthropology, and Sociology
B.A.	Sociology/Anthropology	Social Work, Anthropology, and Sociology
B.A.	Spanish	English and Modern Languages
B.S.E.	Spanish Education	English and Modern Languages
B.S.E.	Special Education**	Education and Special Education

Note: * Indicates a choice of concentrations exists within this degree

** Indicates second certification options are available in this degree

Undergraduate Minor Offerings: Fall 2007

Minor	Department
Accounting	Business and Economics
African-American Studies	English and Modern Languages
Anthropology	Social Work, Anthropology, and Sociology
Art History	Art
Biology	Biology
Business Administration	Business and Economics
Canadian Studies	Philosophy
Chemistry	Chemistry and Physics
Communication	Communication and Theater
Computer Science	Mathematics and Computer Information Science
Creative Writing	English and Modern Languages
Criminal Justice Administration	Criminal Justice Administration
Economics & Finance	Business and Economics
Education	Education and Special Education
English Literature	English and Modern Languages
Environmental Studies	History and Political Science
Forensic Science	Chemistry and Physics
French	English and Modern Languages
General Computing	Mathematics and Computer Information Science
Geography	Geography and Geology
Geology	Geography and Geology
German	English and Modern Languages
Gerontology Studies	Social Work, Anthropology, and Sociology
History	History and Political Science
Information Systems	Mathematics and Computer Information Science
International Studies	History and Political Science
Latin American Studies	Interdisciplinary
Management	Business and Economics
Marketing	Business and Economics
Mathematics	Mathematics and Computer Information Science
Music	Music
Nutrition	Robert Packer Health Sciences
Philosophy	Philosophy
Physics	Chemistry and Physics
Political Science	History and Political Science
Pre-Law	Philosophy
Psychology	Psychology
Psychology of Human Development	Psychology
Regional Planning	Geography and Geology
Social Welfare	Social Work, Anthropology, and Sociology
Sociology	Social Work, Anthropology, and Sociology
Spanish	English and Modern Languages
Statistics	Mathematics and Computer Information Science
Studio Art	Art
Theatre	Communication and Theater
Travel and Tourism	Business and Economics
Women's Studies	English and Modern Languages

Graduate Degree and Major Offerings

Fall 2007

Degree	Program	Department
M.Ed.	Art Education	Art
M.Ed.	Elementary Education**	Education and Special Education
M.S.	Education**	Education and Special Education
M.S.N.	Nursing*	Robert Packer Health Sciences
M.Ed.	School Library and Information Technologies*	School Library and Information Technologies
M.Ed.	Special Education**	Education and Special Education

Note:*Indicates this is an online degree program

** Indicates second certification options are available in this degree

Full-Time Cost of Annual Attendance

Expense	Academic year				
	2003-04	2004-05	2005-06	2006-07	2007-08
Undergraduate Tuition					
In-State	\$4,598	\$4,810	\$4,906	\$5,038	\$5,177
Good neighbor	\$7,588	\$7,938	\$8,096	\$8,314	\$8,544
Out-of-State	\$11,496	\$12,026	\$12,266	\$12,598	\$12,944
Mandatory Fees					
In-State	\$1,324	\$1,370	\$1,502	\$1,613	\$1,827
Out-of-State	\$1,374	\$1,420	\$1,565	\$1,676	\$1,916
Graduate Tuition					
In-State	\$5,518	\$5,772	\$5,888	\$6,048	\$6,214
Out-of-State	\$8,830	\$9,236	\$9,422	\$9,678	\$9,944
Mandatory Fees					
In-State	\$1,082	\$1,126	\$1,189	\$1,215	\$1,287
Out-of-State	\$1,132	\$1,176	\$1,252	\$1,278	\$1,376
Housing & Dining*					
Room	\$3,424	\$3,560	\$3,824	\$3,824	\$3,910
Board	\$1,842	\$1,896	\$2,044	\$2,110	\$2,326

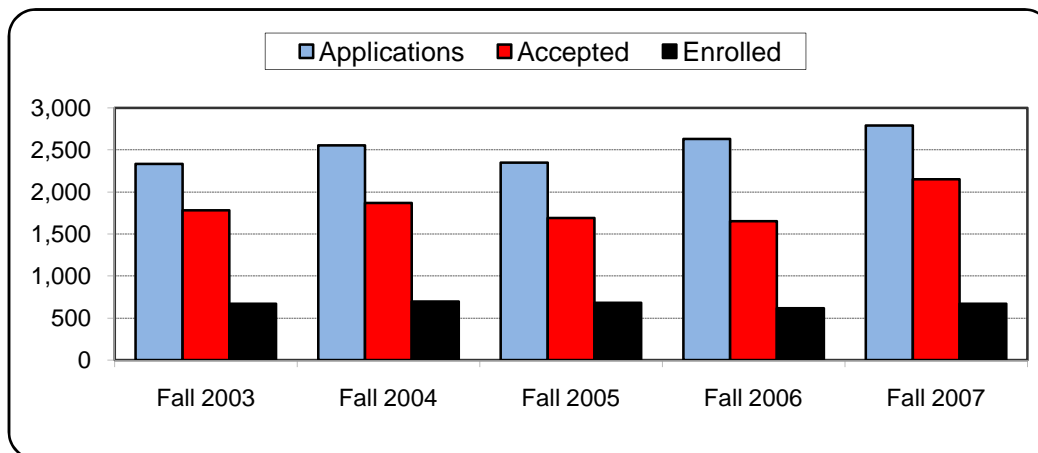
*Room and board are based on double room occupancy and 14 meals per week.

Data Source: Annual reports of Basic Student Changes to PASSHE, 2003-2007

ADMISSIONS

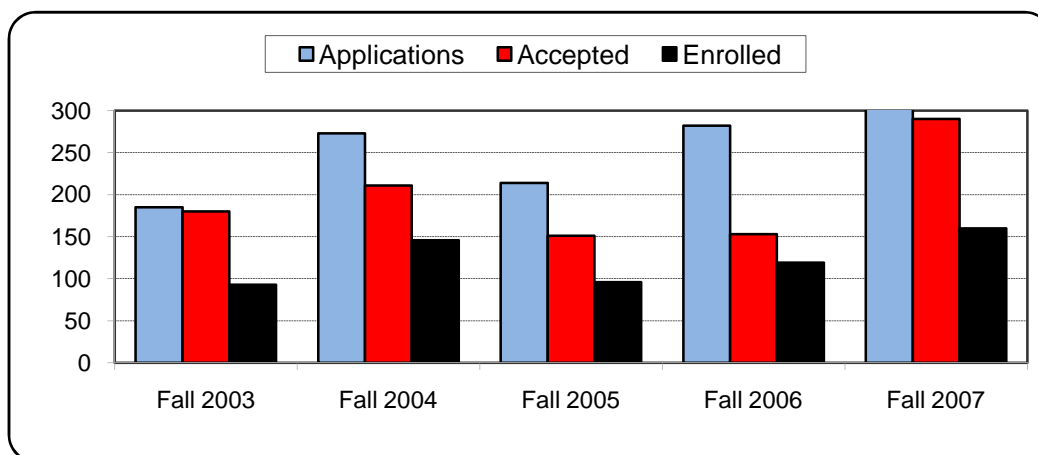
Admission Application Statistics Applications, Acceptances, and Enrollment of First-Time Full-Time Undergraduate Students By Residency Status

Pennsylvania Residents	Fall 2003	Fall 2004	Fall 2005	Fall 2006	Fall 2007
Applications	1,834	2,014	1,920	2,116	2,170
Accepted	1,437	1,488	1,377	1,302	1,643
Enrolled	569	591	578	507	557
% Accepted	78.4%	73.9%	71.7%	61.5%	75.7%
% Yield	39.6%	39.7%	42.0%	38.9%	33.9%
Non Pennsylvania Residents					
Applications	502	542	430	515	621
Accepted	346	381	314	350	507
Enrolled	102	105	104	109	113
% Accepted	68.9%	70.3%	73.0%	68.0%	81.6%
% Yield	29.5%	27.6%	33.1%	31.1%	22.3%
Total					
Applications	2,336	2,556	2,350	2,631	2,791
Accepted	1,783	1,869	1,691	1,652	2,150
Enrolled	671	696	682	616	670
% Accepted	76.3%	73.1%	72.0%	62.8%	77.0%
% Yield	37.6%	37.2%	40.3%	37.3%	31.2%



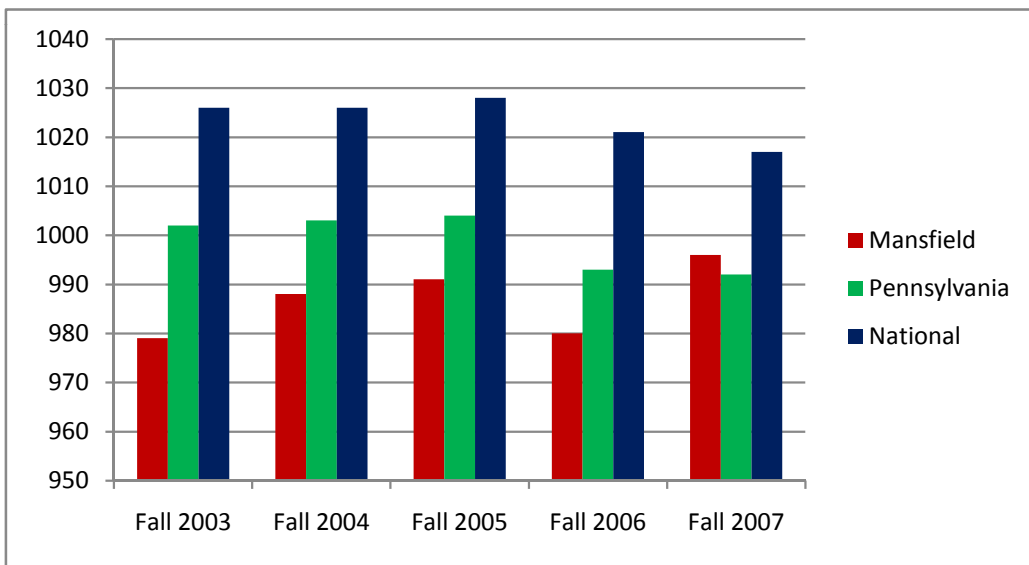
Admission Application Statistics Applications, Acceptances, and Enrollment of Graduate Students by Residency Status

Pennsylvania Residents	Fall 2003	Fall 2004	Fall 2005	Fall 2006	Fall 2007
Applications	99	180	121	124	196
Accepted	96	118	94	76	169
Enrolled	52	94	64	55	92
% Accepted	97.0%	65.6%	77.7%	61.3%	86.2%
% Yield	54.2%	79.7%	68.1%	72.4%	54.4%
Non Pennsylvania Residents					
Applications	86	93	93	158	156
Accepted	84	93	57	77	121
Enrolled	41	52	32	64	68
% Accepted	97.7%	100.0%	61.3%	48.7%	77.6%
% Yield	48.8%	55.9%	56.1%	83.1%	56.2%
Total					
Applications	185	273	214	282	352
Accepted	180	211	151	153	290
Enrolled	93	146	96	119	160
% Accepted	97.3%	77.3%	70.6%	54.3%	82.4%
% Yield	51.7%	69.2%	63.6%	77.8%	55.2%



Academic Profile: Average SAT Scores First-Time Full-Time

	Fall 2003	Fall 2004	Fall 2005	Fall 2006	Fall 2007
Mansfield University					
Verbal	493	499	491	489	497
Mathematics	486	489	500	491	499
Total	979	988	991	980	996
Pennsylvania					
Verbal	500	501	501	493	493
Mathematics	502	502	503	500	499
Total	1002	1003	1004	993	992
National					
Verbal	507	508	508	503	502
Mathematics	519	518	520	518	515
Total	1026	1026	1028	1021	1017



Note: National and State Data obtained from The College Board

ENROLLMENT

Geographic Origins of All Enrolled Students

Enrollment by State

STATE	Fall 2003	Fall 2004	Fall 2005	Fall 2006	Fall 2007
Alabama	0	0	1	0	2
Alaska	0	0	0	2	4
Arizona	0	0	0	1	1
Arkansas	0	0	0	1	0
California	1	1	1	6	10
Colorado	1	1	1	9	8
Connecticut	4	4	3	4	3
Delaware	2	3	4	5	4
District of Columbia	0	1	3	2	2
Florida	3	3	8	7	7
Georgia	3	2	1	4	2
Hawaii	0	0	1	2	3
Illinois	1	5	2	4	1
Iowa	0	0	0	1	0
Kansas	0	1	1	1	1
Kentucky	1	0	1	2	1
Maine	3	2	4	4	6
Maryland	6	4	7	11	7
Massachusetts	4	4	1	4	5
Michigan	0	3	1	2	1
Minnesota	1	0	0	0	0
Mississippi	3	0	0	2	1
Missouri	0	0	0	4	3
Montana	1	0	0	1	0
Nevada	0	0	0	2	1
New Hampshire	3	3	2	1	3
New Jersey	31	31	27	32	39
New Mexico	1	0	1	1	1
New York	683	638	597	600	577
North Carolina	0	1	3	4	2
Ohio	7	16	16	21	20
Oregon	1	1	0	2	1
Pennsylvania	2700	2743	2668	2554	2557
South Carolina	0	1	1	0	2
Tennessee	1	1	0	2	4
Texas	0	1	2	3	3
Utah	0	0	0	2	1
Vermont	0	0	0	0	1
Virginia	5	8	6	13	7
Washington	3	4	2	15	13
West Virginia	2	2	0	1	2
Wisconsin	0	0	2	1	3
Wyoming	0	0	0	2	2

Geographic Origins of All Enrolled Students
Pennsylvania Counties with a Five Year Average Greater than 4

County	Fall 2003	Fall 2004	Fall 2005	Fall 2006	Fall 2007	5 Year Average
Adams	6	9	15	14	19	12.6
Allegheny	32	26	20	18	11	21.4
Berks	60	46	40	38	38	44.4
Blair	16	16	13	16	10	14.2
Bradford	520	517	477	437	455	481.2
Bucks	25	45	47	45	41	40.6
Butler	8	8	6	4	5	6.2
Cambria	5	8	9	6	5	6.6
Carbon	16	14	9	9	9	11.4
Centre	15	17	21	17	19	17.8
Chester	22	19	25	23	29	23.6
Clearfield	9	8	20	18	16	14.2
Clinton	14	19	24	17	16	18.0
Columbia	29	32	23	25	25	26.8
Crawford	7	13	9	5	7	8.2
Cumberland	20	25	24	25	30	24.8
Dauphin	45	48	43	48	49	46.6
Delaware	26	25	21	21	26	23.8
Elk	4	4	9	11	12	8.0
Erie	25	20	21	19	12	19.4
Franklin	9	10	7	10	15	10.2
Huntingdon	11	10	11	8	7	9.4
Lackawanna	77	61	61	53	44	59.2
Lancaster	51	54	54	52	56	53.4
Lebanon	17	23	12	16	11	15.8
Lehigh	14	24	25	28	29	24.0
Luzerne	57	49	56	49	42	50.6
Lycoming	101	114	118	134	128	119.0
Mc Kean	24	22	15	16	18	19.0
Mifflin	10	13	8	11	14	11.2
Monroe	21	21	20	28	32	24.4
Montgomery	52	53	48	51	45	49.8
Montour	13	11	11	10	11	11.2
Northampton	33	34	25	41	41	34.8
Northumberland	57	49	39	36	29	42.0
Perry	7	11	8	11	10	9.4
Philadelphia	76	116	111	106	92	100.2
Pike	10	15	17	17	20	15.8
Potter	91	98	90	90	89	91.6
Schuylkill	40	35	40	36	42	38.6
Snyder	19	17	16	19	19	18.0
Sullivan	23	23	26	22	19	22.6
Susquehanna	62	66	73	66	79	69.2
Tioga	700	693	701	660	633	677.4
Union	24	22	27	21	19	22.6
Warren	6	11	6	6	5	6.8
Washington	5	6	5	4	1	4.2
Wayne	32	30	38	34	32	33.2
Westmoreland	8	8	8	4	5	6.6
Wyoming	14	16	13	11	22	15.2
York	65	52	45	38	47	49.4

Geographic Origins of All Enrolled Students
Good Neighbor Counties with a Five Year Average Greater than 4

State	County	Fall 2003	Fall 2004	Fall 2005	Fall 2006	Fall 2007	5 Year Average
New York	Broome	49	44	49	55	52	49.8
	Cayuga	8	4	3	3	4	4.4
	Chemung	204	200	170	176	162	182.4
	Chenango	2	4	4	10	9	5.8
	Livingston	10	7	9	1	6	6.6
	Monroe	38	39	38	40	28	36.6
	Onondaga	21	27	19	21	15	20.6
	Ontario	23	18	16	13	15	17.0
	Oswego	9	5	3	2	2	4.2
	Schuylar	18	17	17	11	14	15.4
	Steuben	173	165	163	146	137	156.8
	Tioga	56	50	49	44	42	48.2
	Tompkins	14	16	12	11	10	12.6
	Wayne	3	5	7	8	5	5.6
	Yates	4	7	4	1	6	4.4

Countries of Origin for All Enrolled International Students

Country	Fall 2003	Fall 2004	Fall 2005	Fall 2006	Fall 2007
Argentina	0	0	0	1	0
Australia	0	1	0	1	0
Austria	2	1	0	0	2
Bangladesh	2	2	1	0	0
Belgium	0	0	0	1	0
Brazil	1	1	0	0	0
Bulgaria	1	1	1	0	0
Cameroon	1	1	0	0	0
Canada*	21	47	1	2	4
China	1	0	0	2	5
Cote D Ivore	0	0	0	0	1
Dominican Republic	0	1	1	0	0
Ethiopia	2	0	0	1	1
France	2	0	1	1	5
Germany	3	2	1	2	2
Ghana	2	3	2	1	0
Greece	0	0	1	1	0
Iceland	0	1	0	0	0
India	2	1	1	1	0
Iran	0	1	0	0	0
Ireland	0	0	1	0	0
Japan	2	2	3	1	0
Jordan	0	0	0	1	1
Kenya	0	0	0	0	1
Korea	0	1	1	1	0
Mexico	0	0	0	0	1
Nepal	1	1	0	0	0
Nigeria	2	2	1	0	0
Phillipines	1	1	1	0	0
Romania	0	0	1	0	0
Russia	6	8	8	5	3
Senegal	0	0	1	0	1
Sierra Leone	1	1	0	0	0
Singapore	0	0	1	1	1
Spain	0	0	0	1	0
Sri Lanka	1	0	0	0	0
Sweden	1	0	0	0	0
Switzerland	1	1	0	0	1
Tanzania	1	1	0	0	0
Trinidad & Tobago	1	1	2	2	2
United Kingdom	0	0	1	1	1
Venezuela	1	0	0	0	0
Yugoslavia	1	1	1	0	0
Total	60	83	32	27	32

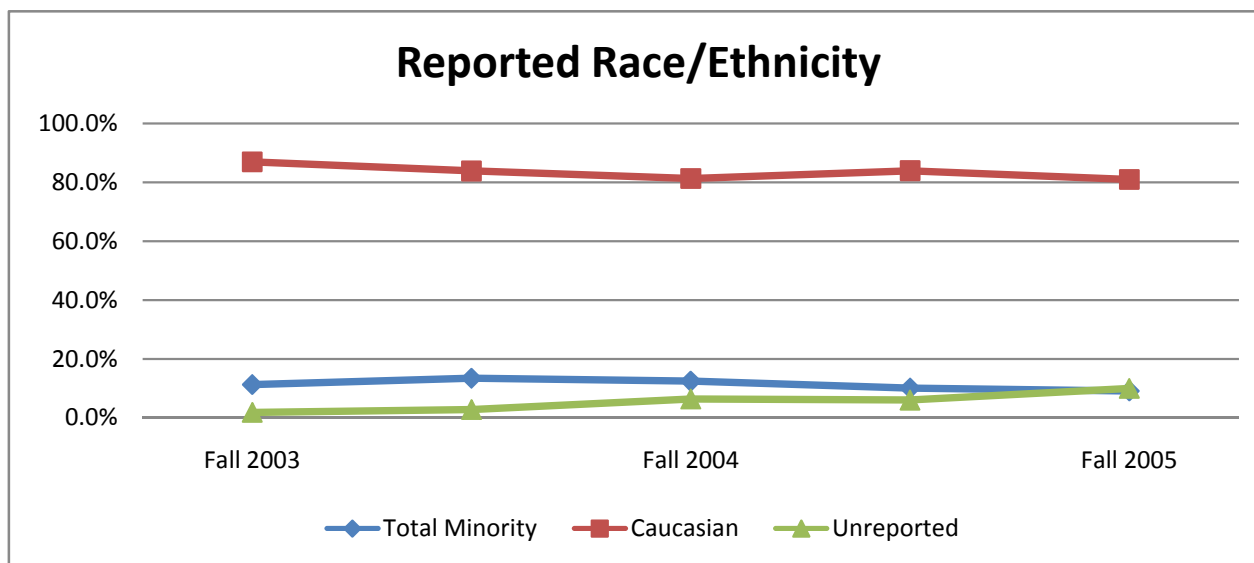
*Enrollment primarily from online students via partnership with select Canadian schools.

This partnership was terminated in 2005

Undergraduate Demographics First-Year Cohort Profile

Race/Ethnicity	Fall 2003		Fall 2004		Fall 2005		Fall 2006		Fall 2007	
	N	%	N	%	N	%	N	%	N	%
African American	52	7.9%	62	9.6%	49	8.0%	43	7.6%	33	5.8%
Native American	4	0.6%	7	1.1%	7	1.1%	2	0.4%	4	0.7%
Asian	6	0.9%	5	0.8%	6	1.0%	3	0.5%	3	0.5%
Latino	12	1.8%	13	2.0%	14	2.3%	9	1.6%	12	2.1%
<i>Total Minority</i>	74	11.3%	87	13.4%	76	12.4%	57	10.1%	52	9.1%
<i>% Reported Minority</i>		11.5%		13.8%		13.2%		10.7%		10.1%
Caucasian	571	86.9%	544	83.8%	498	81.2%	475	83.9%	463	80.9%
Unreported	12	1.8%	18	2.8%	39	6.4%	34	6.0%	57	10.0%
<i>Grand Total</i>	657		649		613		566		572	
Gender										
Female	385	58.6%	376	57.9%	383	62.5%	339	59.9%	344	60.1%
Male	272	41.4%	273	42.1%	230	37.5%	227	40.1%	228	39.9%
High School Rank										
Top 10%	40	6.1%	55	8.5%	69	11.3%	62	11.0%	55	9.6%
On Campus Residents										
	527	80.2%	541	83.4%	509	83.0%	474	83.7%	526	92.0%
In-State										
	569	86.6%	591	91.1%	578	94.3%	507	89.6%	539	94.2%

Note: Cohort refers to those students who entered in the fall semester as first-time (post high school graduation), full-time, Bachelor degree seeking students.



Total Fall Headcount Enrollment with Demographics

Undergraduate										
	Fall 2003		Fall 2004		Fall 2005		Fall 2006		Fall 2007	
Race/Ethnicity	N	%	N	%	N	%	N	%	N	%
African American	145	4.6%	198	6.3%	176	5.9%	191	6.5%	156	5.3%
Native American	30	0.9%	30	1.0%	27	0.9%	22	0.7%	20	0.7%
Asian	21	0.7%	25	0.8%	19	0.6%	21	0.7%	17	0.6%
Latino	30	0.9%	38	1.2%	42	1.4%	43	1.5%	54	1.8%
<i>Total Undergraduate Minority</i>	226	7.1%	291	9.3%	264	8.8%	277	9.4%	247	8.5%
Caucasian	2,908	91.8%	2,735	87.5%	2,596	86.9%	2,510	85.5%	2,464	84.4%
Unreported	0	0.0%	57	1.8%	98	3.3%	121	4.1%	178	6.1%
Non-resident Alien	34	1.1%	44	1.4%	28	0.9%	28	1.0%	32	1.1%
<i>Total Undergraduate</i>	3,168		3,127		2,986		2,936		2,921	
Gender										
Female	1,946	61.4%	1,914	61.2%	1,861	62.3%	1,795	61.1%	1,820	62.3%
Male	1,222	38.6%	1,213	38.8%	1,125	37.7%	1,141	38.9%	1,101	37.7%
Load										
Full-Time	2,894	91.4%	2,813	90.0%	2,714	90.9%	2,676	91.1%	2,672	91.5%
Part-Time	274	8.6%	314	10.0%	272	9.1%	260	8.9%	249	8.5%
Level										
Freshman	1,059	33.4%	1,393	44.5%	1,060	35.5%	985	33.5%	991	33.9%
Sophomore	646	20.4%	495	15.8%	597	20.0%	640	21.8%	617	21.1%
Junior	617	19.5%	509	16.3%	540	18.1%	557	19.0%	580	19.9%
Senior	741	23.4%	699	22.4%	705	23.6%	704	24.0%	656	22.5%
Non-Degree	105	3.3%	31	1.0%	84	2.8%	50	1.7%	77	2.6%
Graduate										
	Fall 2003		Fall 2004		Fall 2005		Fall 2006		Fall 2007	
Race/Ethnicity	N	%	N	%	N	%	N	%	N	%
African American	3	0.9%	6	1.4%	13	3.2%	26	6.1%	15	3.6%
Native American	5	1.4%	2	0.5%	1	0.2%	4	0.9%	3	0.7%
Asian	3	0.9%	6	1.4%	3	0.7%	3	0.7%	1	0.2%
Latino	4	1.1%	4	0.9%	4	1.0%	6	1.4%	9	2.2%
<i>Total Graduate Minority</i>	15	4.3%	18	4.2%	21	5.2%	39	9.2%	28	6.7%
Caucasian	336	95.5%	400	93.2%	364	90.1%	366	86.3%	360	86.3%
Unreported	0	0.0%	11	2.6%	16	4.0%	17	4.0%	24	5.8%
Non-resident Alien	1	0.3%	0	0.0%	3		2		5	1.2%
<i>Total Graduate</i>	352		429		404		424		417	
Gender										
Female	282	80.1%	338	78.8%	349	86.4%	365	86.1%	352	84.4%
Male	70	19.9%	91	21.2%	55	13.6%	59	13.9%	65	15.6%
Load										
Full-Time	88	25.0%	105	24.5%	94	23.3%	70	16.5%	62	14.9%
Part-Time	264	75.0%	324	75.5%	310	76.7%	354	83.5%	355	85.1%
Grand Total	3,520		3,556		3,390		3,360		3,338	

**Primary Major by Academic Discipline
Undergraduate Majors**

Department	Fall 2003	Fall 2004	Fall 2005	Fall 2006	Fall 2007
Art	83	57	63	85	87
Biology	148	159	156	152	149
Business	275	275	217	220	203
Chemistry	30	35	55	56	58
Communication	174	165	141	138	124
Computer Science	79	60	56	56	75
Criminal Justice	264	275	312	306	252
Dietetics	44	44	40	40	49
Economics	4	4	2	5	8
Elementary Education	339	274	252	226	243
English Literature	82	82	63	63	64
French	4	2	4	4	5
Geography	43	38	43	41	35
Geology	10	12	7	7	12
German	4	4	4	1	4
History	88	98	85	101	90
Liberal Studies	47	50	43	41	39
Mathematics	46	50	39	37	52
Music	222	227	228	240	221
Nursing	185	196	193	192	199
Philosophy	21	19	14	14	13
Physics	18	26	23	23	21
Political Science	18	22	26	22	21
Psychology	147	133	140	123	140
Social Work	98	141	140	127	91
Sociology/Anthropology	14	11	11	15	17
Spanish	11	10	15	5	7
Special Education	82	63	66	64	65
Undeclared	380	375	384	391	371

**Primary Major by Program
Graduate Majors**

Program	Fall 2003	Fall 2004	Fall 2005	Fall 2006	Fall 2007
Art	19	14	14	20	15
Education & Special Education	140	166	140	114	131
School Library & Information Technology	146	157	149	209	223
Music	12	12	4	6	6
Robert Packer Health Sciences		27	42	32	27
Graduate Studies	10	22	17	11	15

Enrollment by Major
All Undergraduate Majors
 Includes Double Majors

Department	Major with Concentration	Fall 2003	Fall 2004	Fall 2005	Fall 2006	Fall 2007	5 Year Average
Academic & Human Development	Liberal Studies: A.A.	1				54	27.5
	Liberal Studies: B.A.	46	50	44	41	39	44.0
	<i>Total</i>	47	50	44	41	93	55.0
Academic Advising Center	Undeclared and Academic Exploration	380	375	384	391	371	380.2
Art	Art Education	41	29	29	33	33	33.0
	Art History	16	16	27	51	56	33.2
	Studio Art	27	12	8	3	2	10.4
	<i>Total</i>	84	57	64	87	91	76.6
Biology	Biology	52	47	47	62	53	52.2
	Biology Education	13	9	8	3	2	7.0
	Biology: Cell and Molecular Concentration	36	44	41	36	35	38.4
	Biology: Environmental Science Concentration	13	17	16	13	13	14.4
	Biology: Fisheries Concentration	32	38	37	34	35	35.2
	Medical Technology	10	11	14	8	11	10.8
	<i>Total</i>	156	166	163	156	149	158.0
Business & Economics	Business Administration: Accounting Concentration	74	63	53	58	56	60.8
	Business Administration: General Business Concentration	53	73	47	56	48	55.4
	Business Administration: International Business Concentration	17	16	11	9	7	12.0
	Business Administration: Management Concentration	78	85	78	71	52	72.8
	Business Administration: Marketing Concentration	36	31	20	20	22	25.8
	Economics	4	4	2	5	9	4.8
	Travel & Tourism: AS	5	8	6	16	11	9.2
	Travel & Tourism: BS	31	25	21	16	20	22.6
<i>Total</i>	298	305	238	251	225	263.4	
Chemistry & Physics	Chemistry	26	31	23	16	13	21.8
	Chemistry Education	3	3	3	5	4	3.6
	Chemistry: Biochemistry Concentration	1	1	3	4	3	2.4
	Chemistry: Forensic Science Concentration			27	34	41	34.0
	Physics	12	24	18	19	12	17.0
	Physics Education	2	3	2	2	1	2.0
	Physics: Nanotechnology Concentration				1	0	0.5
	Physics: Pre-Engineering Concentration	6	3	5	5	9	5.6
<i>Total</i>	50	65	81	86	83	73.0	
Communications & Theatre	Communication	2	5	1	6	17	6.2
	Mass Communication: Broadcasting Concentration	98	89	75	82	59	80.6
	Mass Communication: Journalism Concentration	34	34	39	32	20	31.8
	Mass Communication: Public Relations Concentration	66	55	40	33	39	46.6
	Theatre	16	6	2	2	2	5.6
<i>Total</i>	216	189	157	155	137	170.8	
Criminal Justice Administration	Criminal Justice Administration: AS	38	40	55	58	52	48.6
	Criminal Justice Administration: BS	229	239	260	249	220	239.4
	<i>Total</i>	267	279	315	307	272	288.0
Education & Special Education	Elementary Education (includes second certifications)	340	275	252	229	242	267.6
	Leadership for Children and Adults with Disabilities	2	7	10	10	20	9.8
	Special Education	81	59	58	10	17	45.0
	<i>Total</i>	423	341	320	249	279	322.4
English and Modern Foreign Languages	English	40	39	28	30	36	34.6
	English Education	43	44	35	34	26	36.4
	French	1	0	1	1	4	1.4
	French Education	3	2	3	3	1	2.4
	German	2	2	2	0	4	2.0

Enrollment by Major
All Undergraduate Majors
 Includes Double Majors

Department	Major with Concentration	Fall 2003	Fall 2004	Fall 2005	Fall 2006	Fall 2007	5 Year Average
English and Modern Foreign Languages	German Education	2	2	2	1	1	1.6
	Spanish	5	4	8	1	3	4.2
	Spanish Education	7	7	8	4	4	6.0
	<i>Total</i>	<i>103</i>	<i>100</i>	<i>87</i>	<i>74</i>	<i>79</i>	<i>88.6</i>
Geography & Geology	Earth & Space Science Education	11	13	7	7	11	9.8
	Geography	1	0	3	3	3	2.0
	Geography: Mapping Technology Concentration	6	4	5	6	5	5.2
	Geography: Environmental Science Concentration	36	33	36	34	26	33.0
	Geography: Regional Planning Concentration	1	3	1	1	1	1.4
	Geography: Watershed Management					1	1.0
	Mapping Technology (A.S.)	1	1	1	1	1	1.0
<i>Total</i>	<i>56</i>	<i>54</i>	<i>53</i>	<i>52</i>	<i>48</i>	<i>52.6</i>	
History & Political Science	History	28	44	44	56	59	46.2
	Political Science	17	21	27	23	24	22.4
	Social Studies: History	61	59	44	46	34	48.8
	<i>Total</i>	<i>106</i>	<i>124</i>	<i>115</i>	<i>125</i>	<i>117</i>	<i>117.4</i>
Mathematics and Computer	Computer & Information Science: Computer Science Concentration	42	31	34	37	38	36.4
	Computer & Information Science: Information Systems Concentration	43	33	25	22	20	28.6
	Computer Information Systems: A.S.	7	8	10	11	17	10.6
	Mathematics	14	16	14	5	4	10.6
	Mathematics Education	33	35	28	26	30	30.4
	Mathematics: Applied Mathematics Concentration			2	3	12	5.7
	Mathematics: Pure Mathematics Concentration			1	5	9	5.0
<i>Total</i>	<i>139</i>	<i>123</i>	<i>114</i>	<i>109</i>	<i>130</i>	<i>123.0</i>	
Music	Music	16	15	21	18	18	17.6
	Music Education	152	149	147	157	156	152.2
	Music: Music Industry Concentrations	7	6	10	18	31	14.4
	Music Performance: Instrumental	7	6	10	9	6	7.6
	Music Performance: Keyboard			1	1	2	1.3
	Music Performance: Voice	8	8	6	10	4	7.2
	Music Therapy	26	38	34	33	23	30.8
	Music: Elective Studies in Business	20	21	23	20	6	18.0
<i>Total</i>	<i>236</i>	<i>243</i>	<i>252</i>	<i>266</i>	<i>246</i>	<i>248.6</i>	
Philosophy	Philosophy	23	23	16	15	13	18.0
	Philosophy: Pre-Law Concentration					2	2.0
	<i>Total</i>	<i>23</i>	<i>23</i>	<i>16</i>	<i>15</i>	<i>15</i>	<i>18.4</i>
Psychology	Psychology: Counseling Concentration					9	9.0
	Psychology: General Psychology Concentration	120	116	118	93	112	111.8
	Psychology: Human Resource Management Concentration	32	21	23	33	23	26.4
	<i>Total</i>	<i>152</i>	<i>137</i>	<i>141</i>	<i>126</i>	<i>144</i>	<i>140.0</i>
Robert Packer Health Sciences	Nursing	169	176	173	170	175	172.6
	Nursing R.N. to B.S.N	16	20	20	20	24	20.0
	Nutrition: Dietetics Concentration	31	42	38	40	48	39.8
	Nutrition: Sports Nutrition Concentration	19	12	8	3	1	8.6
	Radiology Technology	22	21	21	18	20	20.4
	Respiratory Therapy	23	20	18	26	31	23.6
<i>Total</i>	<i>280</i>	<i>291</i>	<i>278</i>	<i>277</i>	<i>299</i>	<i>285.0</i>	
Social Work and Anthropology/Sociology	Social Work	100	142	139	127	92	120.0
	Sociology/Antropology	14	11	11	15	18	13.8
	<i>Total</i>	<i>114</i>	<i>153</i>	<i>150</i>	<i>142</i>	<i>110</i>	<i>133.8</i>

Annualized Student and Faculty FTE
Undergraduate Only
Academic Year 2007-2008*

Department	Program	Faculty Credit Hours	Student Credit Hours	Faculty FTE	Student FTE	S/F Ratio (Credit Hour Based)
Art		77	1,714	3.21	57.13	17.81
	<i>Art Education</i>	9	75	0.38	2.50	6.67
	<i>Art History</i>	27	1,176	1.13	39.20	34.84
	<i>Art</i>	41	463	1.71	15.43	9.03
Biology		108	4,343	4.50	144.77	32.17
	<i>Biology</i>	74	1,739	3.08	57.97	18.80
	<i>Biology Science</i>	34	2,604	1.42	86.80	61.27
Business and Economics		222	5,562	9.25	185.40	20.04
	<i>Accounting</i>	42	1,080	1.75	36.00	20.57
	<i>Business</i>	117	2,961	4.88	98.70	20.25
	<i>Economics</i>	42	942	1.75	31.40	17.94
	<i>Travel & Tourism</i>	21	579	0.88	19.30	22.06
Chemistry and Physics		123	3,887	5.13	129.57	25.28
	<i>Astronomy</i>	13	795	0.54	26.50	48.92
	<i>Chemistry</i>	69	2,314	2.88	77.13	26.83
	<i>Physics</i>	35	664	1.46	22.13	15.18
	<i>General Science</i>	6	114	0.25	3.80	15.20
Communications and Theatre		219	4,797	9.13	159.90	17.52
	<i>Communication</i>	174	3,603	7.25	120.10	16.57
	<i>Journalism</i>	24	390	1.00	13.00	13.00
	<i>Theatre</i>	21	804	0.88	26.80	30.63
Criminal Justice		84	3,246	3.50	108.20	30.91
Education & Special Education		208	5,063	8.67	168.77	19.47
	<i>Education</i>	64	1,471	2.67	49.03	18.39
	<i>Elementary Education</i>	83	2,119	3.46	70.63	20.42
	<i>Special Education</i>	61	1,473	2.54	49.10	19.32
Geography and Geology		103	3,414	4.29	113.80	26.52
	<i>Astronomy</i>	9	738	0.38	24.60	65.60
	<i>Geography</i>	57	1,549	2.38	51.63	21.74
	<i>Geology</i>	34	1,049	1.42	34.97	24.68
	<i>Regional Planning</i>	3	78	0.13	2.60	20.80
History & Political Science		147	4,179	6.13	139.30	22.74
	<i>History</i>	108	3,237	4.50	107.90	23.98
	<i>Political Science</i>	39	942	1.63	31.40	19.32
English and Modern Languages		405	8,619	16.88	287.30	17.03
	<i>English</i>	276	6,606	11.50	220.20	19.15
	<i>French</i>	30	288	1.25	9.60	7.68
	<i>German</i>	24	324	1.00	10.80	10.80
	<i>Russian</i>	9	78	0.38	2.60	6.93
	<i>Spanish</i>	60	1,113	2.50	37.10	14.84
	<i>Women's Studies</i>	6	210	0.25	7.00	28.00
Mathematics & Computer Information		259	6,755	10.79	225.17	20.86
	<i>Computer Info Sci</i>	99	2,523	4.13	84.10	20.39
	<i>Mathematics</i>	160	4,232	6.67	141.07	21.16
Music		304	4,200	12.67	140.00	11.05
	<i>Music - Applied</i>	145	870	6.04	29.00	4.80
	<i>Music- Ensemble</i>	38	927	1.58	30.90	19.52
	<i>Music Therapy</i>	13	66	0.54	2.20	4.06
	<i>Music</i>	108	2,337	4.50	77.90	17.31

Annualized Student and Faculty FTE
Undergraduate Only
Academic Year 2007-2008*

Department	Program	Faculty Credit Hours	Student Credit Hours	Faculty FTE	Student FTE	S/F Ratio (Credit Hour Based)
Philosophy		93	2,277	3.88	75.90	19.59
	<i>Canadian Studies</i>	3	117	0.13	3.90	31.20
	<i>Philosophy</i>	90	2,160	3.75	72.00	19.20
Psychology		180	6,067	7.50	202.23	26.96
Robert Packer Health Sciences		198	5,066	8.25	168.87	20.47
	<i>Dietetics</i>	36	1,062	1.50	35.40	23.60
	<i>Health & Phys Ed</i>	22	776	0.92	25.87	28.22
	<i>Nursing</i>	83	2,653	3.46	88.43	25.57
	<i>Respiratory Therapy</i>	32	364	1.33	12.13	9.10
	<i>X-Ray Technology</i>	25	211	1.04	7.03	6.75
Social Work, Anthropology, & Sociology		177	4,383	7.38	146.10	19.81
	<i>Anthropology</i>	31	695	1.29	23.17	17.94
	<i>Sociology</i>	69	2,145	2.88	71.50	24.87
	<i>Social Work</i>	77	1,543	3.21	51.43	16.03
Other		155	1,324	6.46	44.13	6.83
	<i>China</i>	6	42	0.25	1.40	5.60
	<i>ESL</i>	9	33	0.38	1.10	2.93
	<i>Foreign Exchange</i>	36	144	1.50	4.80	3.20
	<i>Honors</i>	78	459	3.25	15.30	4.71
	<i>UNV</i>	26	646	1.08	21.53	19.88
Grand Total		4,231	74,896	176.292	2496.53	14.16

Data Source: Course Section Data

*Academic year includes Fall and Spring terms as defined by IPEDS.

All credits were calculated as (course enrollment*course credit).

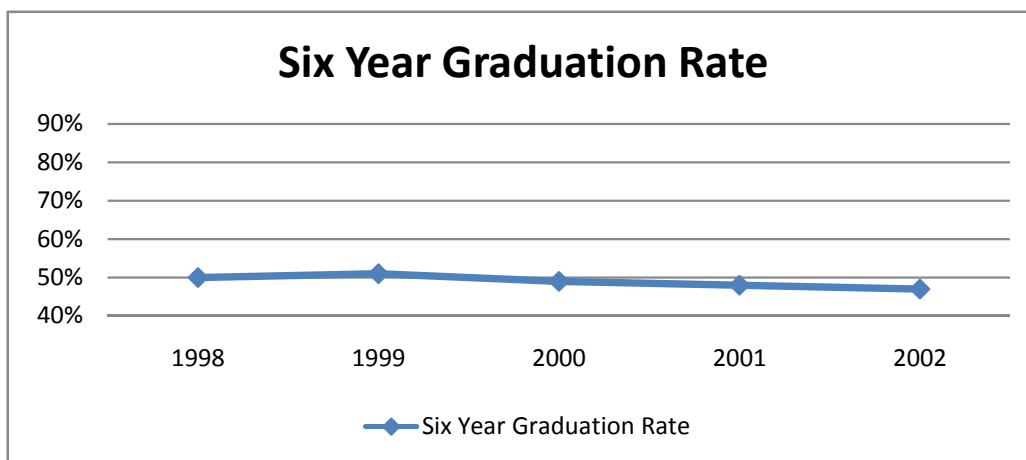
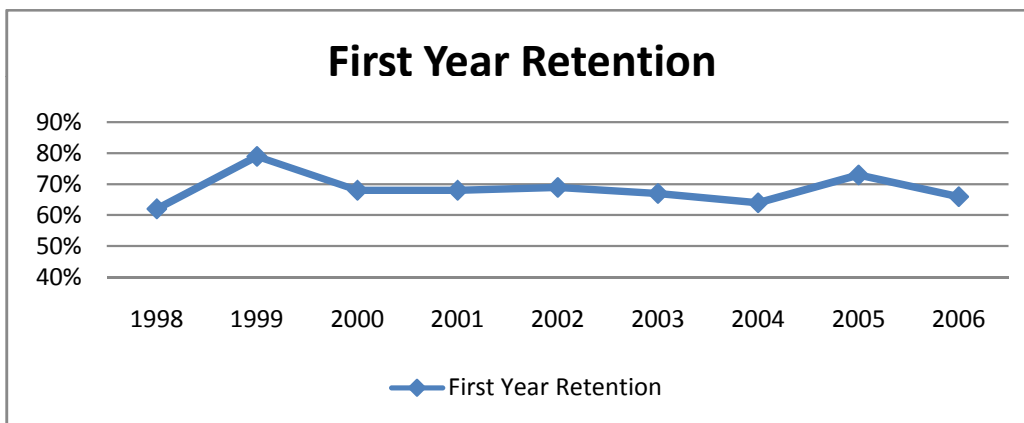
Credits assigned to the department affiliation of the instructor.

Per IPEDS the following types of courses were not included:

Student teaching, individualized instruction, independent study, and labs

University Retention and Graduation Rates by Cohort

Entering Fall	Total Enrolled	After First Semester	After Year One	After Year Two	After Year Three		After Year Four		After Year Five		Sixth Year	
		% Enrolled	% Enrolled	% Enrolled	% Enrolled	% Graduated	% Enrolled	% Graduated	% Enrolled	% Graduated	% Enrolled	% Graduated
1998	599	NR	62%	54%	51%	3%	24%	38%	5%	47%	3%	50%
1999	586	NR	79%	67%	63%	3%	26%	40%	5%	49%	2%	51%
2000	614	85%	68%	59%	53%	5%	21%	41%	4%	47%	1%	49%
2001	616	86%	68%	58%	51%	5%	17%	40%	4%	46%	2%	48%
2002	633	86%	69%	58%	52%	7%	23%	35%	5%	45%		47%
2003	657	86%	67%	52%	46%	4%	16%	32%		39%		
2004	649	84%	64%	54%	48%	4%		25%				
2005	613	88%	73%	61%		2%						
2006	566	85%	66%									
2007	572	86%										



DEGREES CONFERRED

Degrees Conferred
First Award Only By Degree Type

Degree	2002-2003	2003-2004	2004-2005	2005-2006	2006-2007
Associate of Arts	0	1	0	0	0
Associate of Applied Arts	11	12	20	16	15
Associate of Science	12	16	8	10	20
<i>Total</i>	23	29	28	26	35
Bachelor of Arts	54	57	76	68	77
Bachelor of Music	27	38	37	31	37
Bachelor of Science	282	279	270	241	285
Bachelor of Science in Education	160	140	114	91	89
Bachelor of Science in Nursing	23	25	36	34	36
Bachelor of Social Work	31	16	39	41	49
<i>Total</i>	577	555	572	506	573
Master of Arts	0	1	4	6	4
Master of Education	72	82	83	103	96
Master of Music	2	3	0	0	1
Master of Science	9	12	8	13	26
Master of Science in Nursing	0	0	0	16	10
<i>Total</i>	83	98	95	138	137

*Data for the 2007-08 degrees conferred will be available fall 2008

Degrees Conferred

By Department, Degree, and Major

Department	Degree Awarded	Major	2002-03	2003-04	2004-05	2005-06	2006-07	5 Year Average
Academic & Human Development	BA	Liberal Studies	22	22	31	23	29	25.4
Art	BA	Art History & Appreciation	3	3	4	5	8	4.6
	BS	Fine Arts-General	2	7	2	3	1	3.0
	BSE	Fine Arts-General	11	5	2	5	5	5.6
	MED	Fine Arts-General	2	6	7	3	9	5.4
		<i>Total</i>	18	21	15	16	23	18.6
Biology	BS	Aquatic Studies	5	2	5	4	6	4.4
	BS	Biology-General	23	16	14	13	22	17.6
	BSE	Biology-General	2	2	0	3	0	1.4
		<i>Total</i>	30	20	19	20	28	23.4
Business & Economics	AS	Business Admin & Mgmt-General	5	6	3	0	4	3.6
	BS	Business Admin & Mgmt-General	60	72	78	55	55	64.0
		<i>Total</i>	65	78	81	55	59	67.6
Chemistry & Physics	BS	Chemistry-General	6	2	3	6	3	4.0
	BSE	Chemistry	1	1	0	0	0	0.4
	BS	Physics-General	0	0	3	3	8	2.8
	BSE	Physics	0	0	1	0	0	0.2
		<i>Total</i>	7	3	7	9	11	7.4
Communications & Theatre	BS	Communications-General	30	33	54	30	36	36.6
	BS	Dramatic Arts	1	5				3.0
		<i>Total</i>	31	38	54	30	36	39.6
Criminal Justice	AS	Criminal Justice Administration	4	10	7	7	12	8.0
	BS	Criminal Justice Administration	70	60	46	56	91	64.6
		<i>Total</i>	74	70	53	63	103	72.6
Education & Special Education	BS	Exceptional Persons	0	1	3	1	4	1.8
	BSE	Elementary Education	81	80	67	41	47	63.2
	BSE	Special Education-General	37	28	12	19	17	22.6
	MED	Elementary Education	27	13	24	20	27	22.2
	MED	Special Education-General	17	23	18	22	16	19.2
	MED	Education	12					12.0
	MS	Education-General	0	12	8	23	26	13.8
		<i>Total</i>	174	157	132	126	137	145.2
Geography & Geology	AS	Geography					1	1.0
	BS	Geography	13	12	9	10	14	11.6
	BSE	Geology Earth Science	3	2	5	0	2	2.4
		<i>Total</i>	16	14	14	10	16	14.0
History & Political Science	BA	History	6	6	10	14	15	10.2
	BA	Political Sci & Government	4	5	3	7	4	4.6
	BSE	History	10	8	15	4	8	9.0
	BSE	Political Science	0	0	1	0	0	0.2
		<i>Total</i>	20	19	29	25	27	24.0
English & Modern Languages	BA	English - General	9	4	10	7	7	7.4
	BSE	English - General	6	6	6	8	5	6.2
	BA	French	0	0	1	0	0	0.2
	BA	Spanish	0	0	1	2	0	0.6
	BA	German	0	2	0	2	0	0.8
	BSE	French	0	1	0		1	0.5
	BSE	German	1		0	1	0	0.5
	BSE	Spanish	1	1	0	2	1	1.0
		<i>Total</i>	17	14	18	22	14	17.0
Library Information Sciences	MED	Library Science/Librarianship	14	40	34	58	44	38.0

Degrees Conferred

By Department, Degree, and Major

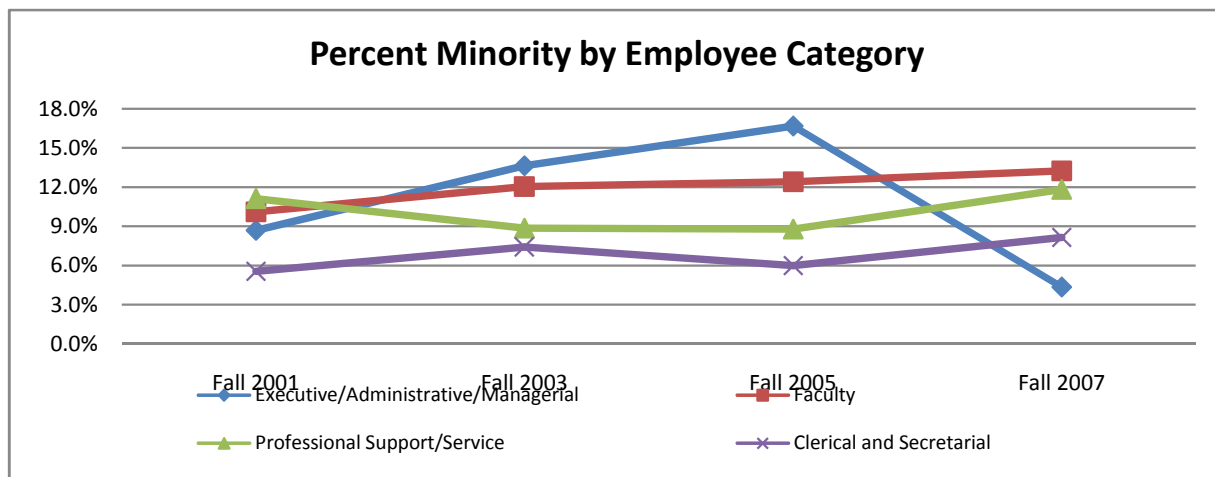
Department	Degree Awarded	Major	2002-03	2003-04	2004-05	2005-06	2006-07	5 Year Average
Mathematics and Computer Info	AS	Information Systems			1	2	4	2.3
	BS	Information Systems	2	26	17	10	6	12.2
	BS	Mathematics-General	0	3	5	6	2	3.2
	BSE	Mathematics-General	5	6	5	8	3	5.4
		<i>Total</i>	7	35	27	24	11	20.8
Music	BA	Music-General	6	3	7	3	6	5.0
	BM	Music Merchandising	1	4	5	3	7	4.0
	BM	Music Performance	5	2	1	7	7	4.4
	BM	Music Therapy	3	7	2	3	5	4.0
	BM	Music-General	18	25	29	18	18	21.6
	MA	Music-General	0	1	4	8	4	3.4
	MM	Music-General	2	3	0	1	1	1.4
	<i>Total</i>	35	45	48	43	48	43.8	
Philosophy	BA	Philosophy	3	1	6	4	2	3.2
Psychology	BS	Psychology-General	32	35	21	30	27	29.0
Robert Packer Health Sciences	AAS	Radiograph Med Technology	8	8	10	10	8	8.8
	AAS	Respiratory Therapy Technology	3	4	10	6	7	6.0
	BS	Food Science & Human Nutr-Gen	10	5	8	12	10	9.0
	BS	Medical Laboratory Technology	1	0	1	2	0	0.8
	BSN	Nursing-General	23	25	36	34	36	30.8
	MSN	Nursing-General				16	10	13.0
	<i>Total</i>	80	78	92	114	100	92.8	
Social Work-Anthropology-Sociology	BA	Sociology/Anthropology	2	2	4	1	5	2.8
	BSW	Social Work-General	31	16	39	41	49	35.2
	BSE	Sociology/Anthropology	1					1.0
		<i>Total</i>	34	18	43	42	54	38.2
Grand Total			678	703	724	714	769	717.6

*Data for the 2007-08 degrees conferred will be available fall 2008

FACULTY AND STAFF

Full-Time Employees by Gender and Race/Ethnicity

Full-Time Employee Categories	Total	Gender		Race/Ethnicity					% Minority
		Male	Female	African American	Native American	Asian	Latino	White	
Clerical and Secretarial	49	4	45	0	0	2	2	45	8.2%
Executive/Administrative/Managerial	23	13	10	0	0	0	1	22	4.3%
Faculty	151	85	66	3	0	11	6	131	13.2%
Maintenance	41	23	18	0	0	0	0	41	0.0%
Professional Support/Service	93	43	50	8	2	0	1	82	11.8%
Skilled Crafts	21	21	0	0	0	0	0	21	0.0%
Technical and Paraprofessional	11	1	10	0	0	0	0	11	0.0%
Total	389	190	199	11	2	13	10	353	9.3%
Fall 2005									
Clerical and Secretarial	50	4	46	0	0	2	1	47	6.0%
Executive/Administrative/Managerial	18	10	8	1	0	2	0	15	16.7%
Faculty	153	84	69	4	1	8	6	134	12.4%
Maintenance	40	23	17	0	0	0	0	40	0.0%
Professional Support/Service	91	46	45	7	1	0	0	83	8.8%
Skilled Crafts	23	23	0	0	0	0	0	23	0.0%
Technical and Paraprofessional	11	1	10	0	0	0	0	11	0.0%
Total	386	191	195	12	2	12	7	353	8.5%
Fall 2003									
Clerical and Secretarial	54	7	47	1	0	2	1	50	7.4%
Executive/Administrative/Managerial	22	15	7	2	0	1	0	19	13.6%
Faculty	166	98	68	4	1	10	5	146	12.0%
Maintenance	44	28	16	1	0	0	0	43	2.3%
Professional Support/Service	79	39	40	6	1	0	0	72	8.9%
Skilled Crafts	22	22	0	0	0	0	0	22	0.0%
Technical and Paraprofessional	14	1	13	0	0	0	0	14	0.0%
Total	401	210	191	14	2	13	6	366	8.7%
Fall 2001									
Clerical and Secretarial	54	7	47	1	0	1	1	51	5.6%
Executive/Administrative/Managerial	23	15	8	1	0	1	0	21	8.7%
Faculty	168	100	68	4	1	8	4	151	10.1%
Maintenance	40	23	17	2	0	0	0	38	5.0%
Professional Support/Service	81	46	35	7	2	0	0	72	11.1%
Skilled Crafts	23	23	0	0	0	0	0	23	0.0%
Technical and Paraprofessional	13	2	11	1	0	0	0	12	7.7%
Total	402	216	186	16	3	10	5	368	8.5%



Data Source: HR submissions to IPEDS 2003-2007

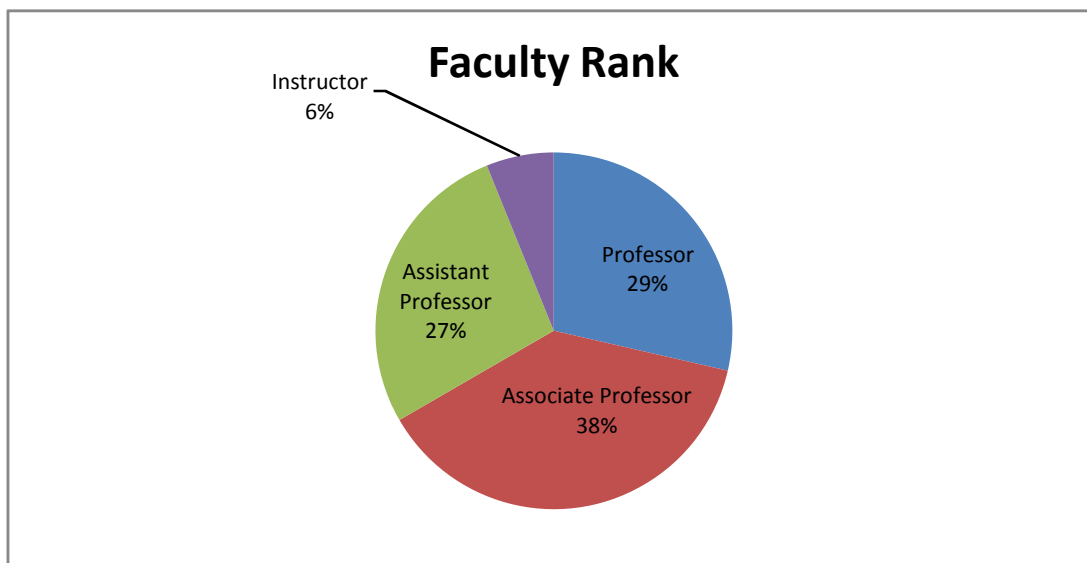
Prepared by the Office of Institutional Research

Full-Time Faculty

by Gender and Rank

Gender	Rank	2003-2004	2004-2005	2005-2006	2006-2007	2007-2008
Men	Professor	35	31	33	31	28
	Associate Professor	32	32	29	30	31
	Assistant Professor	23	19	17	17	20
	Instructor	4	3	5	6	4
	<i>Total Men</i>	<i>94</i>	<i>85</i>	<i>84</i>	<i>84</i>	<i>83</i>
Women	Professor	11	11	11	11	14
	Associate Professor	24	23	23	25	25
	Assistant Professor	24	26	27	23	20
	Instructor	7	5	3	5	5
	<i>Total Women</i>	<i>66</i>	<i>65</i>	<i>64</i>	<i>64</i>	<i>64</i>
Grand Total		160	150	148	148	147

Data Source: HR submissions to IPEDS 2003-2007



RESOURCES, SERVICES, & FACILITIES

Campus Technologies

The Mansfield Campus Technologies Unit promotes, develops, acquires, installs, and supports technology and enabling applications for students, faculty, and staff through group and individual initiatives on campus and in the region.

	Fiscal Year		
	2005-2006	2006-2007	2007-2008
Budget and Expenditures			
Institutional Education and General Budget	\$39,895,000	\$41,358,443	\$42,765,626
Academic Computing	\$266,309	\$525,805	\$364,901
Administrative Computing	\$1,886,345	\$1,290,173	\$1,676,219
Total CT Budget	\$2,152,654	\$1,815,978	\$2,041,120
% of Education and General Budget on CT expenditures	5.4%	4.3%	4.8%
National Benchmark=5.9%			
Hardware and Software			
Personal Computers	2,635	3,287	2,572
In student housing (Included)	1,180	1,966	1,253
Managed Network Switches	242	246	243
Network Attached Printers	102	106	107
Wireless Access Points Installed	36	48	61
Percent of Campus Covered by Network	100%	100%	100%
Percent of Campus covered by Wireless Hotspots	100%	100%	100%
Network Attached Storage Devices (SNAP)	26	26	14
Served Software Applications	83	131	200
Student and Alumni Email Accounts	3,402	7,400	7,400
Faculty-Staff Exchange Accounts	511	509	509
Servers and Operating Systems			
Servers in Central I.T.	33	55	71
Storage Area Networks	3	3	3
Servers in Academic Areas	7	7	5
Servers in Administrative Areas	1	1	0
Classroom and Student Computing Labs			
General Use Labs	18	18	18
Workstations	446	508	516
Specialty Labs	5	5	4
Workstations	143	153	145
Multimedia Classrooms	79	87	87

Data Source: IT annual reports to PASSHE

Library and Information Resources

Highlights

- The North Hall Library is an example of the melding of the traditional with the contemporary. The Victorian architecture that seamlessly houses both a traditional library and modern technology to create a beautiful, comfortable, and useful facility regardless of your information needs.
- All Library Services and Resources are at no additional charge to the student – the cost is included in the tuition
- We provide access to information well beyond our physical resources and our walls. In today's information-rich world "access" not "ownership" is the key. Our licenses, subscriptions and Consortium memberships provided the student access to many of the same materials that you would find at the larger research libraries in major universities. This dramatically increases the quality research options for Mansfield students.
- Technologically advanced. In addition to nearly 50+ standalone computer workstations, circulating laptops, wireless access, over 400 ports throughout the library -- virtually anywhere there's a seat – we provide you access to the world of networked information and applications. In addition, each wing of each floor incorporates a variety of technologies and study areas as a way of accommodating each user's unique learning style and needs.
- The Library has continued to expand our network of hundreds of full-text databases to students for use both on-site and off campus via Collection Development efforts and we are committed to making all databases available both on and off campus.
- The Library enjoys the highest Book Circulation statistics in PASSHE, and the Highest Lending and Borrowing Rates in ILL in the PASSHE System. A sure sign that our resources are aligned to the curriculum.

North Hall Library

The North Hall Library was completed in 1878, yet some project changes were not completed until about 1908. The upper floors serves as a women's dormitory and the lower floor served as a cafeteria until the building was closed in 1975. There was considerable discussion about tearing the dilapidated building down. But, pressure from numerous campus and community leaders stayed the building's demise. Renovated and modernized and reopened in 1996, the building is a showcase for libraries, the campus, and the region.

Resources (2006-2007)

Circulation usage	102,794
Database usage	1,042,740
Books held	246,894
Total items held	1,786,670
Classes held	76
Number of students taught	1,455
Online tutorials completed	650
Interlibrary loans processed	10,968
Online databases	Access to thousands of full-text journals

Library and Information Resources

Mansfield University Library's Rank Among the PASSHE Institutions

Item	Rank
Book expenditures compared to total budget	1/14
Book expenditures compared to total acquisitions budget	1/14
Circulation total per FTE student	1/14
Dollars spent on books per FTE student	1/14
Interlibrary Loan (borrowing) per FTE student	1/14
Interlibrary Loan (lending) per FTE student	1/14

Government Documents

The North Hall Library is designated a United States Government Federal Depository and a Commonwealth of Pennsylvania Depository. The collection includes over 200,000 items (many on microfiche) on a variety of subjects supporting the University curriculum, research and the information needs of the general public.

Teacher Education Resources

The North Hall Library contains a collection of materials that support study and examination by people interested in preschool, elementary secondary, and special education. These materials include sample curriculum guides, teaching handbooks, audiovisual instructional materials, kits, assessment instruments, some textbooks, and other items related to curriculum development and implementation. We also have an extensive collection of children's and young adult books.

Music Education Resources

- The south wing of the first floor was designed with music students in mind. Housing the library's collection of music books and scores, the area also has several carrels with CD players, allowing students to listen while they learn.
- Several private listening rooms complete with a variety of audio equipment, provide students with additional opportunities to study and listen to music. A keyboard even allows them to practice.
- A 25-seat, theatre-like viewing room allows students to watch films and other presentations by their professors and fellow students.

Special Collections

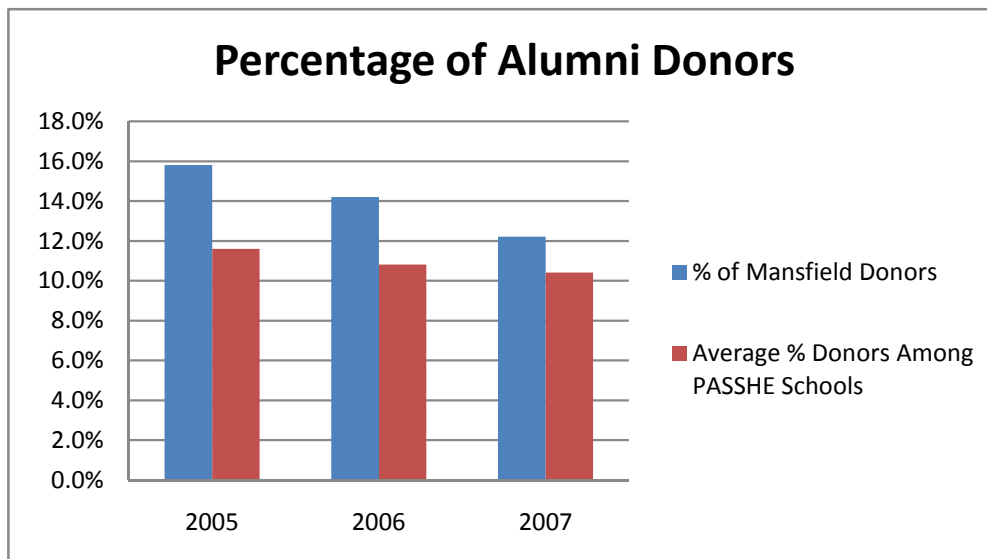
The University Archives have records and materials from 1857 to the present.

Data Source: Library and Information Resources

Advancement

by Fiscal Year

Types of Support	2005	2006	2007
Gifts	\$822,000	\$1,200,000	\$1,279,000
Unrestricted	\$290,000	\$163,000	\$210,000
Restricted	\$286,000	\$327,000	\$459,000
Sources of Support			
Alumni and Parents	\$406,000	\$475,000	\$520,000
Other Individuals	\$204,000	\$193,000	\$289,000
Foundations, Corporations, and Other	\$215,000	\$532,000	\$470,000
Planned Gifts			
Number of Bequests	1	2	3
Value of Bequests	\$29,000	\$53,000	\$144,000
Number of Deferred Gifts	1	2	3
Alumni			
Number of Record	20,044	21,680	22,081
Number of Donors	3,170	3,075	2,696
% of Mansfield Donors	15.8%	14.2%	12.2%
Average % Donors Among PASSHE Schools	11.6%	10.8%	10.4%



Data Source: Voluntary Support of Education 2005-2007

Revenues by Source

Reported by Fiscal Year

Revenue Source	2003	2004	2005	2006	2007
Operating Revenues					
Tuition & Fees	\$14,989,123	\$16,421,681	\$16,623,851	\$16,874,276	\$17,037,882
Grants	\$7,775,674	\$8,010,877	\$8,494,171	\$8,506,445	\$8,938,677
Sales	\$8,534,671	\$9,418,163	\$9,390,123	\$9,544,554	\$9,533,092
Other Operating Revenues	\$644,053	\$707,367	\$482,917	\$941,571	\$788,875
<i>Total Operating Revenues</i>	<i>\$31,943,521</i>	<i>\$34,558,088</i>	<i>\$34,991,062</i>	<i>\$35,866,846</i>	<i>\$36,298,526</i>
Non-Operating Revenues					
State Appropriations	\$17,867,660	\$16,508,034	\$16,480,966	\$17,020,156	\$17,135,329
Grants & Gifts	\$109,289	\$120,632	\$162,921	\$148,973	\$276,172
Investment Income	\$661,503	\$565,726	\$676,594	\$915,555	\$1,513,274
Other Non-Operating Revenues	\$55,075	\$49,465	\$48,855	\$75,481	\$31,076
<i>Total Non-Operating Revenues</i>	<i>\$18,693,527</i>	<i>\$17,243,857</i>	<i>\$17,369,336</i>	<i>\$18,160,165</i>	<i>\$18,955,851</i>
Other Revenues	\$396,727	\$790,434	\$683,163	\$861,539	\$836,428
Grand Total	\$51,033,775	\$52,592,379	\$53,043,561	\$54,888,550	\$56,090,805

Source: IPEDS Finance 2003-2007

Operating Expenses by Source

Reported by Fiscal Year

Operating Expenses	2003	2004	2005	2006	2007
Instruction	\$18,872,892	\$18,966,596	\$18,537,528	\$18,679,149	\$19,959,448
Research	\$0	\$6,615	\$48,715	\$39,670	\$5,935
Public Service	\$1,268,986	\$604,103	\$641,949	\$575,353	\$519,444
Academic Support	\$3,205,951	\$3,758,283	\$3,663,078	\$3,557,407	\$3,560,005
Student Services	\$5,078,914	\$4,502,853	\$4,745,174	\$5,127,002	\$5,886,987
Institutional Support	\$6,943,801	\$8,029,239	\$8,511,656	\$8,941,694	\$9,219,768
Operation & Maintenance of Plant	\$3,654,601	\$3,718,297	\$3,711,254	\$4,086,989	\$4,134,545
Depreciation	\$2,045,071	\$2,742,738	\$2,736,110	\$2,844,216	\$2,860,008
Scholarships & Fellowships	\$1,761,917	\$1,844,520	\$2,032,125	\$2,255,649	\$2,448,839
Auxiliary Enterprises	\$6,717,737	\$6,959,661	\$7,436,549	\$7,400,382	\$7,471,551
Grand Total	\$49,549,870	\$51,132,905	\$52,064,138	\$53,507,511	\$56,066,530

Source: IPEDS Finance 2003-2007